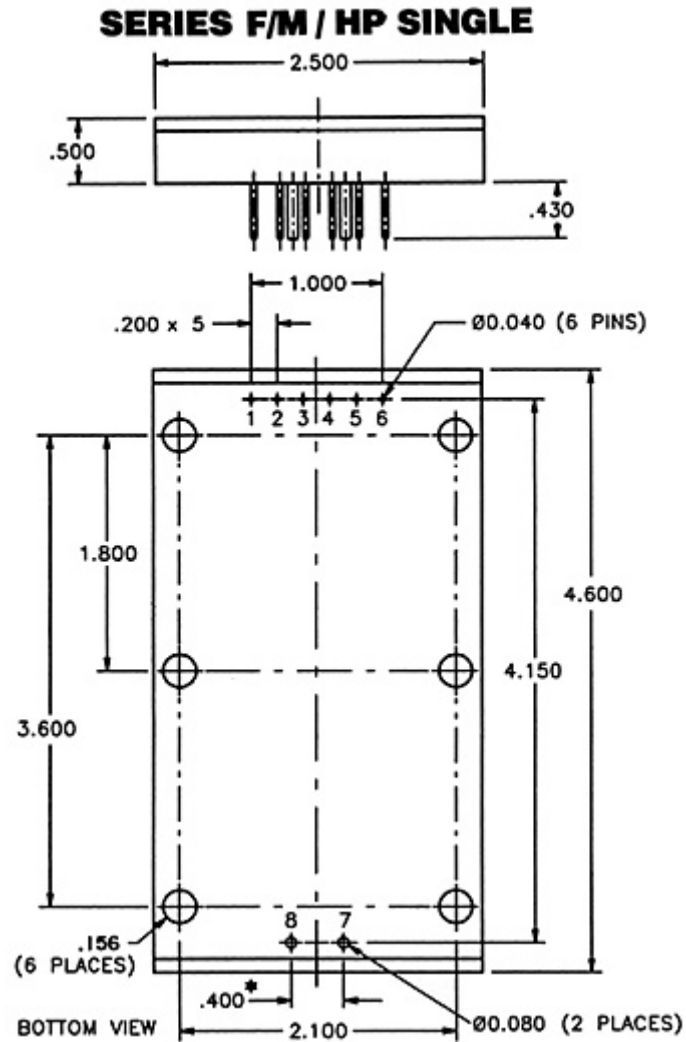


Series F/M/HP

Single, Dual and High Voltage

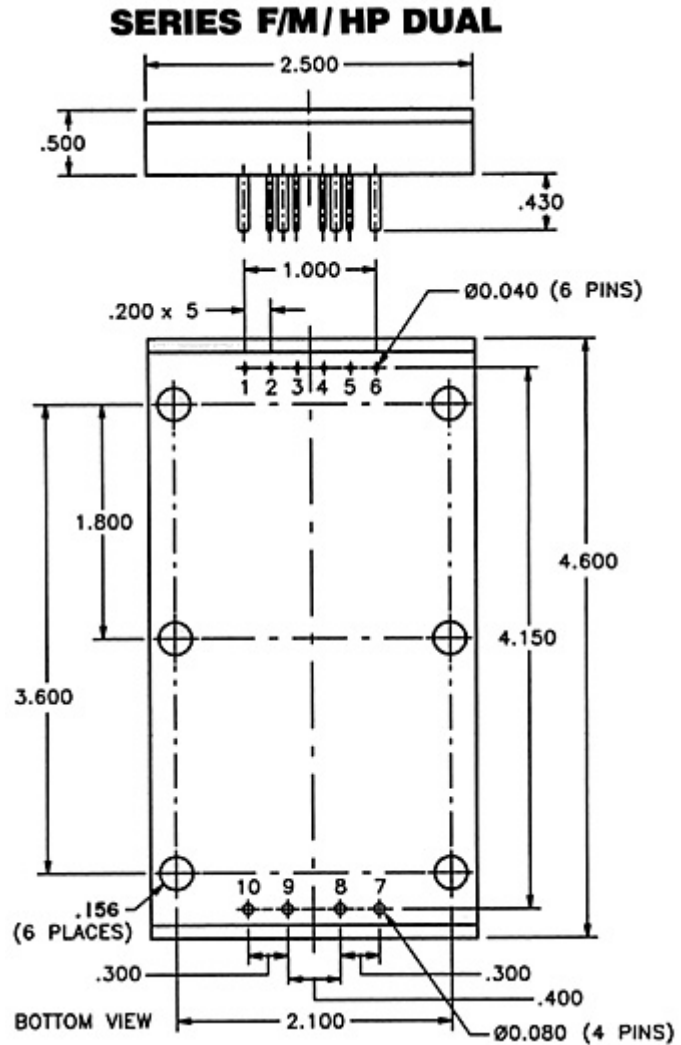
Mechanical Configurations



NOTE: The torque for mounting screws must be 6 to 9 In-Lbs.

SERIES F/M/HP SINGLE	
Pin No.	SINGLE
1	+INPUT
2	TRIM DOWN
3	TRIM
4	TRIM UP
5	SHUT DOWN
6	-INPUT
7	-OUTPUT
8	+ OUTPUT
Typical Weight: 210 Grams	

* 1.00" for any special single output unit of 100 volts or above.



NOTE: The torque for mounting screws must be 6 to 9 In-Lbs.

SERIES F/M/HP DUAL	
Pin No.	DUAL
1	+INPUT
2	TRIM DOWN
3	TRIM
4	TRIM UP
5	SHUT DOWN
6	-INPUT
7	-OUTPUT (1)
8	+ OUTPUT (1)
9	-OUTPUT (2)
10	+ OUTPUT (2)
Typcial Weight: 235 Grams	

100 Volts and Above



Typical Weight: 220 Grams

***Typical Resistance Range for Trim Up and Trim Down**

***Typical Resistance Range for Trim Up and Trim Down**

%				
Resistance	1	2	3	5
Trim				
Trim Up	300K	150K	50K	20K
Trim Down	1M	500K	250K	100K
*These units are typical resistance values, as each individual unit will vary slightly. Use of trim pot to determine resistance value is recommended. Use 1/2 watt minimum power rating resistor.				

For immediate engineering assistance or to place an order:

Call Toll Free: 800-431-1064

PICO Electronics, Inc.

143 Sparks Ave. Pelham, NY 10803-1837

Tel: 914-738-1400 or Fax: 914-738-8225