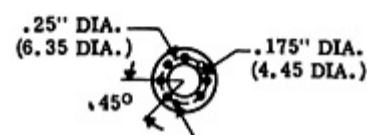
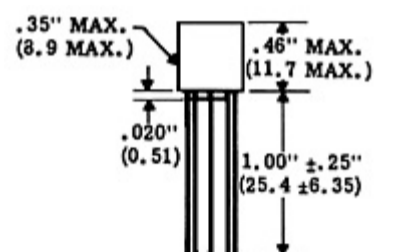


## Ultra Miniature Transformers

### Y Series Thru Hole

#### Specifications

- **MIL-PRF-27:** All units manufactured to MIL-PRF-27, Grade 5 Class S.
- **FREQUENCY RESPONSE:**  $\pm 3$ db, 300 Hz - 100 KHz at 1.0 Milliwatt.
- **MAXIMUM DISTORTION:** 5% With Rated Power Level at 1 KHz and 400 Hz and 300 Hz.
- **DIELECTRIC STRENGTH:** All Units Tested at 200 V RMS.
- **INSULATION RESISTANCE:** Greater Than 10,000 Megohms at 300 V DC.
- **WEIGHT:** 3 Grams.
- **OPERATING TEMPERATURE:** -55° C to +130° C
- **TERMINALS:** Solid .016 Diameter Conductor. Meet solderability per MIL-STD-202 Method 208.
- **THERMAL SHOCK:** 25 Cycles, Method 107, MIL-STD-202, Test Condition -55° C to +130° C



WHITE DOT AT TERMINAL #1  
TERMINALS CLOCKWISE  
FROM PIN #1

DIMENSIONS ARE IN INCHES (MM)

Larger size drawing of Y Series [1]

#### Ultra Miniature Transformers: Y Series

| Pico Part Number | Prim. Imped. Ohms | Sec. Imped. Ohms Split Windings |      | Power Watts      |                   |                   | Prim. Unbal. DC Curr. ma | Prim. DC Resist. Ohms | Sec. DC Resist. Ohms |          | Turns Ratio Prim/Sec. |              | Prices 1-9 *** (US \$) |
|------------------|-------------------|---------------------------------|------|------------------|-------------------|-------------------|--------------------------|-----------------------|----------------------|----------|-----------------------|--------------|------------------------|
|                  |                   | SER                             | PAR  | 1 KHz and higher | 400 Hz and higher | 300 Hz and higher |                          |                       | Ser Conn             | Par Conn | Sec Ser Conn          | Sec Par Conn |                        |
| Y-27003          | 10ct              | 10ct                            | 2.5  | .6               | .2                | .1                | 31.6                     | 1                     | 1.25                 | .32      | 1:1                   | 2:1          | 52.42                  |
| Y-27005          | 20ct              | 8ct                             | 2    | .6               | .2                | .1                | 22.3                     | 2                     | .9                   | .23      | 1.58:1                | 3.16:1       | 52.42                  |
| Y-27010          | 20ct              | 20ct                            | 5    | .6               | .2                | .1                | 22.3                     | 2.1                   | 2.25                 | .56      | 1:1                   | 2:1          | 52.42                  |
| Y-27015          | 32ct              | 32ct                            | 8    | .6               | .2                | .1                | 17.6                     | 3.4                   | 4                    | 1        | 1:1                   | 2:1          | 52.42                  |
| Y-27020          | 40ct              | 40ct                            | 10   | .6               | .2                | .1                | 15.8                     | 4.2                   | 4.5                  | 1.13     | 1:1                   | 2:1          | 49.92                  |
| Y-27025          | 48ct              | 16ct                            | 4    | .6               | .2                | .1                | 14.4                     | 5                     | 1.8                  | .45      | 1.73:1                | 3.46:1       | 52.42                  |
| Y-27030          | 50ct              | 50ct                            | 12.5 | .6               | .2                | .1                | 14.1                     | 5.25                  | 5.6                  | 1.4      | 1:1                   | 2:1          | 52.42                  |
| Y-27035          | 80ct              | 32ct                            | 8    | .6               | .2                | .1                | 11.1                     | 8.4                   | 4                    | 1        | 1.58:1                | 3.16:1       | 68.19                  |
| Y-27040          | 100ct             | 40ct                            | 10   | .6               | .2                | .1                | 10                       | 10                    | 4.5                  | 1.13     | 1.58:1                | 3.16:1       | 68.19                  |
| Y-27045          | 100ct             | 100ct                           | 25   | .6               | .2                | .1                | 10                       | 11                    | 11.25                | 2.8      | 1:1                   | 2:1          | 68.20                  |

#### Ultra Miniature Transformers: Y Series

| Pico Part Number | Prim. Imped. Ohms | Sec. Imped. Ohms Split Windings |     | Power Watts      |                   |                   | Prim. Unbal. DC Curr. ma | Prim. DC Resist. Ohms | Sec. DC Resist. Ohms |          | Turns Ratio Prim/Sec. |              | Prices 1-9 *** (US \$) |
|------------------|-------------------|---------------------------------|-----|------------------|-------------------|-------------------|--------------------------|-----------------------|----------------------|----------|-----------------------|--------------|------------------------|
|                  |                   | SER                             | PAR | 1 KHz and higher | 400 Hz and higher | 300 Hz and higher |                          |                       | Ser Conn             | Par Conn | Sec Ser Conn          | Sec Par Conn |                        |

|           |        |        |      |    |    |    |     |      |      |      |        |         |       |
|-----------|--------|--------|------|----|----|----|-----|------|------|------|--------|---------|-------|
| Y-27050   | 120ct  | 12.8ct | 3.2  | .6 | .2 | .1 | 9.1 | 14.4 | 1.8  | .45  | 3.06:1 | 6.12:1  | 49.41 |
| Y-27055   | 120ct  | 60ct   | 15   | .6 | .2 | .1 | 9.1 | 14.4 | 8.4  | 2.1  | 1.41:1 | 2.83:1  | 65.28 |
| Y-27060   | 120ct  | 120ct  | 30   | .6 | .2 | .1 | 9.1 | 14.4 | 16.8 | 4.2  | 1:1    | 2:1     | 65.28 |
| Y-27065   | 150ct  | 12ct   | 3    | .6 | .2 | .1 | 8.2 | 15   | 1.5  | .38  | 3.54:1 | 7.08:1  | 49.41 |
| Y-27070   | 150ct  | 50ct   | 12.5 | .6 | .2 | .1 | 8.2 | 15   | 6    | 1.5  | 1.73:1 | 3.46:1  | 54.93 |
| Y-27075   | 150ct  | 100ct  | 25   | .6 | .2 | .1 | 8.2 | 15   | 12   | 3    | 1.22:1 | 2.45:1  | 54.93 |
| Y-27080   | 150ct  | 150ct  | 37.5 | .6 | .2 | .1 | 8.2 | 15   | 18   | 4.5  | 1:1    | 2:1     | 64.83 |
| Y-27085   | 150ct  | 600ct  | 150  | .6 | .2 | .1 | 8.2 | 15   | 72   | 18   | 1:2    | 1:1     | 54.93 |
| Y-27090   | 200ct  | 200ct  | 50   | .6 | .2 | .1 | 7   | 22   | 24   | 6    | 1:1    | 2:1     | 54.93 |
| Y-27095   | 300ct  | 12ct   | 3    | .6 | .2 | .1 | 5.8 | 30   | 1.4  | .35  | 5:1    | 10:1    | 49.41 |
| Y-27100   | 300ct  | 50ct   | 12.5 | .6 | .2 | .1 | 5.8 | 30   | 6    | 1.5  | 2.45:1 | 4.9:1   | 54.93 |
| Y-27105   | 300ct  | 150ct  | 37.5 | .6 | .2 | .1 | 5.8 | 30   | 18   | 4.5  | 1.41:1 | 2.83:1  | 54.93 |
| Y-27110   | 300ct  | 300ct  | 75   | .6 | .2 | .1 | 5.8 | 30   | 36   | 9    | 1:1    | 2:1     | 65.28 |
| Y-27115   | 300ct  | 600ct  | 150  | .6 | .2 | .1 | 5.8 | 30   | 72   | 18   | 1:1.41 | 1.41:1  | 51.85 |
| Y-27120   | 320ct  | 12.8ct | 3.2  | .6 | .2 | .1 | 5.6 | 36   | 1.8  | .45  | 5:1    | 10:1    | 49.41 |
| Y-27125   | 400ct  | 40ct   | 10   | .6 | .2 | .1 | 5   | 40   | 4.8  | 1.2  | 3.16:1 | 6.32:1  | 65.28 |
| Y-27130   | 400ct  | 120ct  | 30   | .6 | .2 | .1 | 5   | 40   | 14.5 | 3.6  | 1.83:1 | 3.65:1  | 65.28 |
| Y-27135   | 400ct  | 200ct  | 50   | .6 | .2 | .1 | 5   | 40   | 24   | 6    | 1.41:1 | 2.83:1  | 54.93 |
| Y-27140   | 400ct  | 400ct  | 100  | .6 | .2 | .1 | 5   | 40   | 48   | 12   | 1:1    | 2:1     | 65.28 |
| Y-27145   | 400ct  | 1000ct | 250  | .6 | .2 | .1 | 5   | 40   | 125  | 31   | 1:1.58 | 1.26:1  | 74.87 |
| Y-27150   | 400ct  | 2000ct | 500  | .6 | .2 | .1 | 5   | 40   | 240  | 60   | 1:2.24 | 1:1.12  | 74.87 |
| Y-27155   | 400ct  | 4000ct | 1000 | .6 | .2 | .1 | 5   | 40   | 480  | 120  | 1:3.16 | 1:1.58  | 67.62 |
| Y-27160   | 500ct  | 12.8ct | 3.2  | .6 | .2 | .1 | 4.5 | 50   | 1.5  | .38  | 6.25:1 | 12.5:1  | 58.09 |
| Y-27165   | 500ct  | 16ct   | 4    | .6 | .2 | .1 | 4.5 | 50   | 1.9  | .48  | 5.6:1  | 11.2:1  | 58.09 |
| Y-27170   | 500ct  | 50ct   | 12.5 | .6 | .2 | .1 | 4.5 | 50   | 6    | 1.5  | 3.16:1 | 6.32:1  | 58.09 |
| Y-27175   | 500ct  | 150ct  | 37.5 | .6 | .2 | .1 | 4.5 | 50   | 18   | 4.5  | 1.83:1 | 3.65:1  | 58.09 |
| Y-27180   | 500ct  | 500ct  | 125  | .6 | .2 | .1 | 4.5 | 50   | 60   | 15   | 1:1    | 2:1     | 58.09 |
| Y-27185   | *500ct | 500ct  | -    | .6 | .2 | .1 | 4.5 | 50   | 60   | -    | 1:1    | -       | 58.09 |
| Y-27190   | 500ct  | 600ct  | 150  | .6 | .2 | .1 | 4.5 | 50   | 72   | 18   | 1:1.1  | 1.83:1  | 51.85 |
| Y-27195   | 600ct  | 12.8ct | 3.2  | .6 | .2 | .1 | 4.1 | 60   | 1.5  | .38  | 6.85:1 | 13.7:1  | 46.67 |
| Y-27200   | 600ct  | 30ct   | 7.5  | .6 | .2 | .1 | 4.1 | 60   | 3.6  | .9   | 4.47:1 | 8.94:1  | 51.85 |
| Y-27205   | 600ct  | 48ct   | 12   | .6 | .2 | .1 | 4.1 | 60   | 5.8  | 1.45 | 3.54:1 | 7.07:1  | 51.85 |
| Y-27210   | 600ct  | 200ct  | 50   | .6 | .2 | .1 | 4.1 | 60   | 24   | 6    | 1.73:1 | 3.46:1  | 51.85 |
| Y-27215** | 600ct  | 600ct  | 150  | .6 | .2 | .1 | 4.1 | 60   | 72   | 18   | 1:1    | 2:1     | 51.85 |
| Y-27220** | *600ct | 600ct  | -    | .6 | .2 | .1 | 4.1 | 60   | 72   | -    | 1:1    | -       | 51.85 |
| Y-27225** | 600ct  | 1200ct | 300  | .6 | .2 | .1 | 4.1 | 60   | 144  | 36   | 1:1.41 | 1.41:1  | 51.85 |
| Y-27230   | 640ct  | 12.8ct | 3.2  | .6 | .2 | .1 | 3.9 | 64   | 1.5  | .38  | 7.07:1 | 14.14:1 | 51.85 |
| Y-27235   | 700ct  | 100ct  | 25   | .6 | .2 | .1 | 3.8 | 70   | 12   | 3    | 2.65:1 | 5.29:1  | 51.85 |
| Y-27240   | 800ct  | 12.8ct | 3.2  | .6 | .2 | .1 | 3.5 | 80   | 1.5  | .38  | 7.9:1  | 15.8:1  | 51.85 |
| Y-27245   | 800ct  | 48ct   | 12   | .6 | .2 | .1 | 3.5 | 80   | 5.8  | 1.45 | 4.08:1 | 8.16:1  | 58.09 |
| Y-27250   | 800ct  | 800ct  | 200  | .6 | .2 | .1 | 3.5 | 80   | 96   | 24   | 1:1    | 2:1     | 58.09 |
| Y-27255   | 900ct  | 600ct  | 150  | .6 | .2 | .1 | 3.3 | 90   | 72   | 18   | 1.22:1 | 2.45:1  | 51.85 |
| Y-27260   | 1000ct | 12ct   | 3    | .6 | .2 | .1 | 3.2 | 100  | 1.4  | .35  | 9.13:1 | 18.3:1  | 51.85 |
| Y-27265   | 1000ct | 50ct   | 12.5 | .6 | .2 | .1 | 3.2 | 100  | 6    | 1.5  | 4.47:1 | 8.94:1  | 58.09 |
| Y-27270   | 1000ct | 1000ct | 250  | .6 | .2 | .1 | 3.2 | 100  | 120  | 30   | 1:1    | 2:1     | 58.09 |

**Ultra Miniature Transformers:  
Y Series**

| Pico Part Number | Prim. Imped. Ohms | Sec. Imped. Ohms Split Windings |     | Power Watts      |                   |                   | Prim. Unbal. DC Curr. ma | Prim. DC Resist. Ohms | Sec. DC Resist. Ohms |          | Turns Ratio Prim/Sec. |              | Prices 1-9 *** (US \$) |
|------------------|-------------------|---------------------------------|-----|------------------|-------------------|-------------------|--------------------------|-----------------------|----------------------|----------|-----------------------|--------------|------------------------|
|                  |                   | SER                             | PAR | 1 KHz and higher | 400 Hz and higher | 300 Hz and higher |                          |                       | Ser Conn             | Par Conn | Sec Ser Conn          | Sec Par Conn |                        |
| Y-27275          | 1060ct            | 12.8ct                          | 3.2 | .6               | .2                | .1                | 3.1                      | 106                   | 1.5                  | .38      | 9.1:1                 | 18.2:1       | 51.85                  |
| Y-27280          | 1200ct            | 12.8ct                          | 3.2 | .6               | .2                | .1                | 2.9                      | 120                   | 1.5                  | .38      | 9.68:1                | 19.4:1       | 46.67                  |
| Y-27285          | 1200ct            | 500ct                           | 125 | .6               | .2                | .1                | 2.9                      | 120                   | 60                   | 15       | 1.55:1                | 3.1:1        | 46.67                  |
| Y-27290          | 1200ct            | 1200ct                          | 300 | .6               | .2                | .1                | 2.9                      | 120                   | 144                  | 36       | 1:1                   | 2:1          | 46.67                  |
| Y-27295          | *1200ct           | 1200ct                          | -   | .6               | .2                | .1                | 2.9                      | 120                   | 144                  | -        | 1:1                   | -            | 51.85                  |
| Y-27300          | 1500ct            | 12ct                            | 3   | .6               | .2                | .1                | 2.6                      | 150                   | 1.44                 | .36      | 11.2:1                | 22.4:1       | 51.85                  |
| Y-27305          | 1500ct            | 500ct                           | 125 | .6               | .2                | .1                | 2.6                      | 150                   | 60                   | 15       | 1.73:1                | 3.46:1       | 58.09                  |
| Y-27310          | *1500ct           | 600ct                           | -   | .6               | .2                | .1                | 2.6                      | 150                   | 72                   | -        | 1.58:1                | -            | 74.87                  |
| Y-27315          | *1500ct           | 1500ct                          | -   | .6               | .2                | .1                | 2.6                      | 150                   | 180                  | -        | 1:1                   | -            | 58.09                  |
| Y-27320          | 1600ct            | 12.8ct                          | 3.2 | .6               | .2                | .1                | 2.5                      | 160                   | 1.5                  | .38      | 11.2:1                | 22.4:1       | 51.85                  |

|           |           |          |      |     |    |    |     |      |      |     |        |         |       |
|-----------|-----------|----------|------|-----|----|----|-----|------|------|-----|--------|---------|-------|
| Y-27325   | 2000ct    | 8ct      | 2    | .6  | .2 | .1 | 2.2 | 200  | .96  | .24 | 15.8:1 | 31.6:1  | 58.09 |
| Y-27330   | 2000ct    | 2000ct   | 500  | .6  | .2 | .1 | 2.2 | 200  | 240  | 60  | 1:1    | 2:1     | 67.62 |
| Y-27335   | *2000ct   | 2000ct   | -    | .6  | .2 | .1 | 2.2 | 200  | 240  | -   | 1:1    | -       | 74.87 |
| Y-27340   | 2000ct    | 8000ct   | 2000 | .6  | .2 | .1 | 2.2 | 200  | 960  | 240 | 1:2    | 1:1     | 67.62 |
| Y-27345   | 2500ct    | 2500ct   | 625  | .6  | .2 | .1 | 2   | 250  | 300  | 75  | 1:1    | 2:1     | 67.62 |
| Y-27350   | 3000ct    | 3000ct   | 725  | .6  | .2 | .1 | 1.8 | 300  | 360  | 90  | 1:1    | 2:1     | 79.75 |
| Y-27355   | *3000ct   | 3000ct   | -    | .6  | .2 | .1 | 1.8 | 300  | 360  | -   | 1:1    | -       | 74.87 |
| Y-27360   | 3600ct    | 3600ct   | 900  | .6  | .2 | .1 | 1.7 | 360  | 432  | 108 | 1:1    | 2:1     | 67.62 |
| Y-27365   | 4000ct    | 16ct     | 4    | .6  | .2 | .1 | 1.6 | 400  | 1.92 | .48 | 15.8:1 | 31.6:1  | 67.62 |
| Y-27370** | 4000ct    | 600ct    | 150  | .6  | .2 | .1 | 1.6 | 400  | 72   | 18  | 2.58:1 | 5.16:1  | 67.62 |
| Y-27375   | 4000ct    | 1000ct   | 250  | .6  | .2 | .1 | 1.6 | 400  | 120  | 30  | 2:1    | 4:1     | 67.62 |
| Y-27380   | *4000ct   | 8000ct   | -    | .6  | .2 | .1 | 1.6 | 400  | 960  | -   | 1:1.41 | -       | 67.62 |
| Y-27385   | 5000ct    | 500ct    | 125  | .5  | .2 | .1 | 1.4 | 500  | 60   | 15  | 3.16:1 | 6.32:1  | 54.36 |
| Y-27390   | 5000ct    | 5000ct   | 1250 | .5  | .2 | .1 | 1.4 | 500  | 600  | 150 | 1:1    | 2:1     | 54.36 |
| Y-27395   | 7500ct    | 50ct     | 12.5 | .33 | .2 | .1 | 1.2 | 750  | 6    | 1.5 | 12.2:1 | 24.5:1  | 54.36 |
| Y-27400   | 7500ct    | 100ct    | 25   | .33 | .2 | .1 | 1.2 | 750  | 12   | 3   | 8.66:1 | 17.3:1  | 57.54 |
| Y-27405   | 7500ct    | 600ct    | 150  | .33 | .2 | .1 | 1.2 | 750  | 72   | 18  | 3.54:1 | 7.07:1  | 63.82 |
| Y-27410   | 7500ct    | 2500ct   | 625  | .33 | .2 | .1 | 1.2 | 750  | 300  | 75  | 1.73:1 | 3.46:1  | 63.83 |
| Y-27415   | *7500ct   | 7500ct   | -    | .33 | .2 | .1 | 1.2 | 750  | 900  | -   | 1:1    | -       | 74.87 |
| Y-27420   | 8000ct    | 12.8ct   | 3.2  | .3  | .2 | .1 | 1.1 | 800  | 1.5  | .38 | 25:1   | 50:1    | 54.36 |
| Y-27425   | 8000ct    | 1000ct   | 250  | .3  | .2 | .1 | 1.1 | 800  | 120  | 30  | 2.83:1 | 5.66:1  | 54.36 |
| Y-27430   | *8000ct   | 1200ct   | -    | .3  | .2 | .1 | 1.1 | 800  | 144  | -   | 2.58:1 | -       | 67.62 |
| Y-27435   | *9000ct   | 9000ct   | -    | .27 | .2 | .1 | 1.1 | 900  | 1080 | -   | 1:1    | -       | 70.31 |
| Y-27440   | 10,000ct  | 12.8ct   | 3.2  | .25 | .2 | .1 | 1.0 | 1000 | 1.5  | .38 | 28:1   | 56:1    | 51.85 |
| Y-27445   | 10,000ct  | 16ct     | 4    | .25 | .2 | .1 | 1.0 | 1000 | 1.92 | .48 | 25:1   | 50:1    | 57.32 |
| Y-27450   | 10,000ct  | 100ct    | 25   | .25 | .2 | .1 | 1.0 | 1000 | 12   | 3   | 10:1   | 20:1    | 57.32 |
| Y-27455   | 10,000ct  | 200ct    | 50   | .25 | .2 | .1 | 1.0 | 1000 | 24   | 6   | 7.07:1 | 14.14:1 | 57.32 |
| Y-27460   | 10,000ct  | 500ct    | 125  | .25 | .2 | .1 | 1.0 | 1000 | 60   | 15  | 4.47:1 | 8.94:1  | 57.32 |
| Y-27465   | 10,000ct  | 600ct    | 150  | .25 | .2 | .1 | 1.0 | 1000 | 72   | 18  | 4.08:1 | 8.16:1  | 57.32 |
| Y-27470   | 10,000ct  | 1000ct   | 250  | .25 | .2 | .1 | 1.0 | 1000 | 120  | 30  | 3.16:1 | 6.32:1  | 57.32 |
| Y-27475   | 10,000ct  | 1200ct   | 300  | .25 | .2 | .1 | 1.0 | 1000 | 144  | 36  | 2.89:1 | 5.77:1  | 57.32 |
| Y-27480   | 10,000ct  | 1500ct   | 375  | .25 | .2 | .1 | 1.0 | 1000 | 180  | 45  | 2.58:1 | 5.16:1  | 62.46 |
| Y-27485   | 10,000ct  | 2000ct   | 500  | .25 | .2 | .1 | 1.0 | 1000 | 240  | 60  | 2.24:1 | 4.47:1  | 62.46 |
| Y-27490   | 10,000ct  | 5000ct   | 1250 | .25 | .2 | .1 | 1.0 | 1000 | 600  | 150 | 1.41:1 | 2.83:1  | 66.85 |
| Y-27495   | 10,000ct  | 7500ct   | 1875 | .25 | .2 | .1 | 1.0 | 1000 | 900  | 225 | 1.15:1 | 2.3:1   | 66.85 |
| Y-27500   | 10,000ct  | 10,000ct | 2500 | .25 | .2 | .1 | 1.0 | 1000 | 1200 | 300 | 1:1    | 2:1     | 65.28 |
| Y-27505   | *10,000ct | 10,000ct | -    | .25 | .2 | .1 | 1.0 | 1000 | 1200 | -   | 1:1    | -       | 72.79 |

**Ultra Miniature Transformers:  
Y Series**

| Pico Part Number | Prim. Imped. Ohms | Sec. Imped. Ohms Split Windings |      | Power Watts      |                   |                   | Prim. Unbal. DC Curr. ma | Prim. DC Resist. Ohms | Sec. DC Resist. Ohms |          | Turns Ratio Prim/Sec. |              | Prices 1-9 *** (US \$) |
|------------------|-------------------|---------------------------------|------|------------------|-------------------|-------------------|--------------------------|-----------------------|----------------------|----------|-----------------------|--------------|------------------------|
|                  |                   | SER                             | PAR  | 1 KHz and higher | 400 Hz and higher | 300 Hz and higher |                          |                       | Ser Conn             | Par Conn | Sec Ser Conn          | Sec Par Conn |                        |
| Y-27510          | 15,000ct          | 400ct                           | 100  | .16              | .16               | .1                | .82                      | 1500                  | 48                   | 12       | 6.12:1                | 12.24:1      | 65.28                  |
| Y-27515          | 15,000ct          | 500ct                           | 125  | .16              | .16               | .1                | .82                      | 1500                  | 60                   | 15       | 5.48:1                | 10.95:1      | 65.28                  |
| Y-27520          | 15,000ct          | 600ct                           | 150  | .16              | .16               | .1                | .82                      | 1500                  | 72                   | 18       | 5:1                   | 10:1         | 65.28                  |
| Y-27525          | 15,000ct          | 10,000ct                        | 2500 | .16              | .16               | .1                | .82                      | 1500                  | 1200                 | 300      | 1.22:1                | 2.45:1       | 72.79                  |
| Y-27530          | *15,000ct         | 15,000ct                        | -    | .16              | .16               | .1                | .82                      | 1500                  | 1800                 | -        | 1:1                   | -            | 64.31                  |
| Y-27535          | 15,000ct          | 15,000ct                        | 3750 | .16              | .16               | .1                | .82                      | 1500                  | 1800                 | 450      | 1:1                   | 2:1          | 64.31                  |
| Y-27540          | 16,000ct          | 1000ct                          | 250  | .15              | .15               | .1                | .8                       | 1600                  | 120                  | 30       | 4:1                   | 8:1          | 67.62                  |
| Y-27545          | 20,000ct          | 500ct                           | 125  | .125             | .125              | .1                | .7                       | 2000                  | 60                   | 15       | 6.33:1                | 12.65:1      | 65.28                  |
| Y-27550          | 20,000ct          | 600ct                           | 150  | .125             | .125              | .1                | .7                       | 2000                  | 72                   | 18       | 5.77:1                | 11.55:1      | 65.28                  |
| Y-27555          | 20,000ct          | 800ct                           | 200  | .125             | .125              | .1                | .7                       | 2000                  | 96                   | 24       | 5:1                   | 10:1         | 51.85                  |
| Y-27560          | 20,000ct          | 1000ct                          | 250  | .125             | .125              | .1                | .7                       | 2000                  | 120                  | 30       | 4.47:1                | 8.94:1       | 65.28                  |
| Y-27565          | 20,000ct          | 5000ct                          | 1250 | .125             | .125              | .1                | .7                       | 2000                  | 600                  | 150      | 2:1                   | 4:1          | 65.28                  |
| Y-27570          | 20,000ct          | 10,000ct                        | 2500 | .125             | .125              | .1                | .7                       | 2000                  | 1200                 | 300      | 1.41:1                | 2.83:1       | 65.28                  |
| Y-27575          | *20,000ct         | 20,000ct                        | -    | .125             | .125              | .1                | .7                       | 2000                  | 2400                 | -        | 1:1                   | -            | 65.28                  |
| Y-27580          | 25,000ct          | 500ct                           | 125  | .1               | .1                | .1                | .63                      | 2500                  | 60                   | 15       | 7.07:1                | 14.14:1      | 65.28                  |

|  |           |          |      |      |      |      |     |        |      |     |         |         |       |
|--|-----------|----------|------|------|------|------|-----|--------|------|-----|---------|---------|-------|
| Y-27585  | 25,000ct  | 1000ct   | 250  | .1   | .1   | .1   | .63 | 2500   | 120  | 30  | 5:1     | 10:1    | 65.28 |
| Y-27590  | 30,000ct  | 50ct     | 12.5 | .08  | .08  | .08  | .58 | 3000   | 6    | 1.5 | 24.5:1  | 49:1    | 65.28 |
| Y-27595  | 30,000ct  | 1200ct   | 300  | .08  | .08  | .08  | .58 | 3000   | 144  | 36  | 5:1     | 10:1    | 65.28 |
| Y-27600  | 30,000ct  | 500ct    | 125  | .08  | .08  | .08  | .58 | 3000   | 60   | 15  | 7.75:1  | 15.5:1  | 65.28 |
| Y-27605  | 30,000ct  | 200ct    | 50   | .08  | .08  | .08  | .58 | 3000   | 24   | 6   | 12.25:1 | 24.5:1  | 65.28 |
| Y-27610  | 30,000ct  | 5000ct   | 1250 | .08  | .08  | .08  | .58 | 3000   | 600  | 150 | 2.45:1  | 4.9:1   | 72.75 |
| Y-27615  | 30,000ct  | 10,000ct | 2500 | .08  | .08  | .08  | .58 | 3000   | 1200 | 300 | 1.73:1  | 3.46:1  | 72.75 |
| Y-27620  | *30,000ct | 30,000ct | -    | .08  | .08  | .08  | .58 | 3000   | 3600 | -   | 1:1     | -       | 72.75 |
| Y-27625  | 40,000ct  | 400ct    | 100  | .06  | .06  | .06  | .5  | 4000   | 48   | 12  | 10:1    | 20:1    | 72.75 |
| Y-27630  | 40,000ct  | 2000ct   | 500  | .06  | .06  | .06  | .5  | 4000   | 240  | 60  | 4.47:1  | 8.94:1  | 72.75 |
| Y-27635  | 40,000ct  | 4000ct   | 1000 | .06  | .06  | .06  | .5  | 4000   | 480  | 120 | 3.16:1  | 6.32:1  | 75.46 |
| Y-27640  | 40,000ct  | 20,000ct | 5000 | .06  | .06  | .06  | .5  | 4000   | 2400 | 600 | 1.41:1  | 2.83:1  | 72.75 |
| Y-27645  | *40,000ct | 40,000ct | -    | .06  | .06  | .06  | .5  | 4000   | 4800 | -   | 1:1     | -       | 72.75 |
| Y-27650  | 50,000ct  | 200ct    | 50   | .05  | .05  | .05  | .45 | 5000   | 24   | 6   | 15.8:1  | 31.6:1  | 75.46 |
| Y-27655  | 50,000ct  | 500ct    | 125  | .05  | .05  | .05  | .45 | 5000   | 60   | 15  | 10:1    | 20:1    | 75.46 |
| Y-27660  | 50,000ct  | 600ct    | 150  | .05  | .05  | .05  | .45 | 5000   | 72   | 18  | 9.13:1  | 18.26:1 | 75.46 |
| Y-27665  | 60,000ct  | 15,000ct | 3750 | .04  | .04  | .04  | .41 | 6000   | 1800 | 450 | 2:1     | 4:1     | 75.46 |
| Y-27670  | 62,500ct  | 50ct     | 12.5 | .04  | .04  | .04  | .4  | 6250   | 6    | 1.5 | 35.4:1  | 70.7:1  | 75.46 |
| Y-27675  | 80,000ct  | 15,000ct | 3750 | .03  | .03  | .03  | .35 | 8000   | 1800 | 450 | 2.3:1   | 4.6:1   | 75.46 |
| Y-27680  | 90,000ct  | 10,000ct | 2500 | .028 | .028 | .028 | .33 | 9000   | 1200 | 300 | 3:1     | 6:1     | 75.46 |
| Y-27685  | 95,000ct  | 15,000ct | 3750 | .026 | .026 | .026 | .32 | 9500   | 1800 | 450 | 2.52:1  | 5.03:1  | 75.46 |
| Y-27690  | 100,000ct | 60ct     | 15   | .025 | .025 | .025 | .31 | 10,000 | 7.2  | 1.8 | 40.8:1  | 81.6:1  | 83.51 |
| Y-27695  | 100,000ct | 100ct    | 25   | .025 | .025 | .025 | .31 | 10,000 | 12   | 3   | 31.6:1  | 63.2:1  | 83.51 |
| Y-27700  | 100,000ct | 500ct    | 125  | .025 | .025 | .025 | .31 | 10,000 | 60   | 15  | 14.1:1  | 28.3:1  | 83.51 |
| Y-27705  | 100,000ct | 10,000ct | 2500 | .025 | .025 | .025 | .31 | 10,000 | 1200 | 300 | 3.16:1  | 6.32:1  | 83.51 |
| Y-SHIELD: MU-METAL SHIELD .37" DIA. X .46" HT (9.4 MM DIA. X 11.7 MM HT.) SINGLE SHIELD                              |           |          |      |      |      |      |     |        |      |     |         |         | 8.93  |
| YXX-SHIELD: MU-METAL SHIELD .395" DIA. X .47" HT (10.1 MM DIA. X 11.9 MM HT.) USE WITH Y-SHIELD FOR DOUBLE SHIELDING |           |          |      |      |      |      |     |        |      |     |         |         | 8.93  |

\*Includes Electrostatic Shield

\*\*Miniaturized telephone coupling application

\*\*\*Discount Prices:

- 1-9 Net;
- 10-24 less 10%;
- 25-49 less 16%;
- 50-99 less 23%;
- 100-499 less 30%

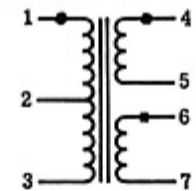
Ordering Instructions:

- No minimum.
- Net 30 days F.O.B. Pelham, NY
- **Delivery--stock to one week for sample orders.**

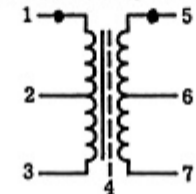
## FEATURES

- Extreme resistance to thermal shock
- Ultra miniature size
- PICO is approved QPL Source (Mil-PRF-27)
- Magnetic Shields available
- Electrostatic shielding can be added
- Variation of standard designs available
- Primary and secondary windings can be used either as input or output.
- Special production techniques ensure uniform size and leads which are free of encapsulant. No meniscus in lead area.
- Every unit can be made with a 300 thermal cycle guarantee using PICO's special SR construction. Contact factory for details.

SCHMATIC FOR TRANSFORMERS WITH SPLIT SECONDARIES



SCHMATIC FOR TRANSFORMERS WITH ELECTROSTATIC SHIELD

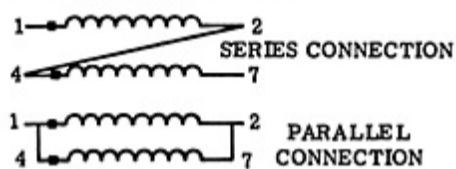


## INDUCTORS

| PART NUMBERS | INDUCTANCE SERIES | DC CURRENT ma | DC RESISTANCE OHMS | PR |
|--------------|-------------------|---------------|--------------------|----|
| Y-27750      | SERIES .075       | 10            | 10.5               |    |
|              |                   | 30            |                    |    |
|              | PARALLEL .018     | 20            | 2.6                |    |
|              |                   | 60            |                    |    |

|         |  |                    |              |  |
|---------|--|--------------------|--------------|--|
| Y-27760 | SERIES .3<br>.15<br>PARALLEL .075<br>.04 | 4<br>20<br>8<br>40 | 25<br>6.2    |  |
| Y-27770 | SERIES 3.5<br>1.0<br>PARALLEL 0.9<br>.25 | 2<br>5<br>4<br>10  | 560<br>140   |  |
| Y-27780 | SERIES 6.0<br>1.5<br>PARALLEL 1.5<br>.38 | 2<br>5<br>4<br>10  | 2100<br>525  |  |
| Y-27790 | SERIES 20<br>8<br>PARALLEL 5<br>2        | 1<br>3<br>2<br>6   | 5100<br>1275 |  |

**SCHEMATIC FOR INDUCTORS**



**Inductors:** All inductors have split windings and measurements are listed for both series and parallel connections. Two values of inductance, each at a particular value of DC Current, are listed for each inductor.

**Delivery - stock to one week for sample orders.**

---

For immediate engineering assistance or to place an order:

**Call Toll Free: 800-431-1064**

**PICO Electronics, Inc.**

143 Sparks Ave. Pelham, NY 10803-1810

Tel: 914-738-1400 or Fax: 914-738-8225

[Go back to Thru Hole Transformers and Inductors menu<sup>\[2\]</sup>](#)

---