

## SERIES VV/SVV

### Low Voltage, Low Profile Plug-In and Surface Mount Single Output, Isolated, Proportional Modules 100 to 500 V dc at 4W Output

The VV/SVV Series of Single Output, Isolated, Proportional DC-DC Converters are manufactured in a miniature encapsulated package. The Series features Surface Mount and Plug-In versions of all units. The operating temperature range of -25°C to +70°C required no current derating and/or heat sink.

#### FEATURES

- Miniature, Surface Mount and Plug-In
- Single Output, Isolated, 4 W max. Output Power
- 5V, 12V, 24V, 28V, and 48Vdc Standard Input Voltages
- 100V to 500Vdc in 5 Standard Output Voltages
- Vout Proportional to Vin over wide voltage range
- Maximum Load Current capability maintained over entire input range
- High Efficiency: to 90%
- Low Ripple: 0.2% to 0.5% Vout
- Operating Temperature: -25°C to +70°C, no heat sink required
- Low Profile: 0.400" Height
- Epoxy encapsulation

#### TYPICAL CHARACTERISTICS:

**Test Conditions:** +25°C

**Operating Temperature Range:** -25°C to +70°C, with no heat sink or electrical derating required

**Storage Temperature Range:** -55°C to +125°C

**Converter Frequency:** 8-25 kHz

**Output Temperature Coefficient (typ.):** 0.02%/°C

#### OPTIONS AVAILABLE

- Per Mil. Std. 883
- Expanded Operating Temperature: -40°C to +85°C
- Stabilization Bake (at +125°C ambient)
- Temperature Cycle (between -55°C and +125°C)
- Hi Temp, Burn-in Cycle
- Vibration, Shock, Humidity, and Altitude
- Consult factory for your particular requirements

PICO Part Number		Input Voltage Range (VDC)		* Maximum Load Current (mA)	Output Voltage Range (VDC)		Max. Output Power (Watts)	Typical Efficiency @ Full Load & VIN,MAX. (%)	Ripple Typical at Full Load (%)	Price (US \$)
PLUG-IN	SURFACE MOUNT	Min	Max		Min	Max				
5VV100S	5SVV100S	2.5	5	40	47	100	4	83	0.5	116.63
5VV200S	5SVV200S	2.5	5	20	90	200	4	82	0.5	127.33
5VV300S	5SVV300S	2.5	5	13.5	130	300	4	82	0.3	138.03
5VV400S	5SVV400S	2.5	5	10	175	400	4	81	0.3	148.73
5VV500S	5SVV500S	2.5	5	8	220	500	4	81	0.2	159.43
12VV100S	12SVV100S	4.0	12	40	30	100	4	87	0.5	116.63
12VV200S	12SVV200S	4.0	12	20	60	200	4	85	0.5	127.33
12VV300S	12SVV300S	4.0	12	13.5	90	300	4	85	0.3	138.03
12VV400S	12SVV400S	4.0	12	10	120	400	4	84	0.3	148.73
12VV500S	12SVV500S	4.0	12	8	150	500	4	84	0.2	159.43
24VV100S	24SVV100S	6.0	24	40	23	100	4	85	0.4	116.63
24VV200S	24SVV200S	6.0	24	20	48	200	4	84	0.4	127.33
24VV300S	24SVV300S	6.0	24	13.5	70	300	4	84	0.3	138.03
24VV400S	24SVV400S	6.0	24	10	95	400	4	83	0.3	148.73
24VV500S	24SVV500S	6.0	24	8	120	500	4	83	0.2	159.43
28VV100S	28SVV100S	7.0	28	40	23	100	4	85	0.4	116.63
28VV200S	28SVV200S	7.0	28	20	48	200	4	84	0.4	127.33
28VV300S	28SVV300S	7.0	28	13.5	70	300	4	84	0.3	138.03
28VV400S	28SVV400S	7.0	28	10	95	400	4	83	0.3	148.73
28VV500S	28SVV500S	7.0	28	8	120	500	4	83	0.2	159.43

48VV100S	48SVV100S	14	48	40	27	100	4	89	0.5	116.63
48VV200S	48SVV200S	14	48	20	50	200	4	89	0.5	127.33
48VV300S	48SVV300S	14	48	13.5	73	300	4	90	0.2	138.03
48VV400S	48SVV400S	14	48	10	98	400	4	89	0.2	148.73
48VV500S	48SVV500S	14	48	8	130	500	4	89	0.2	159.43

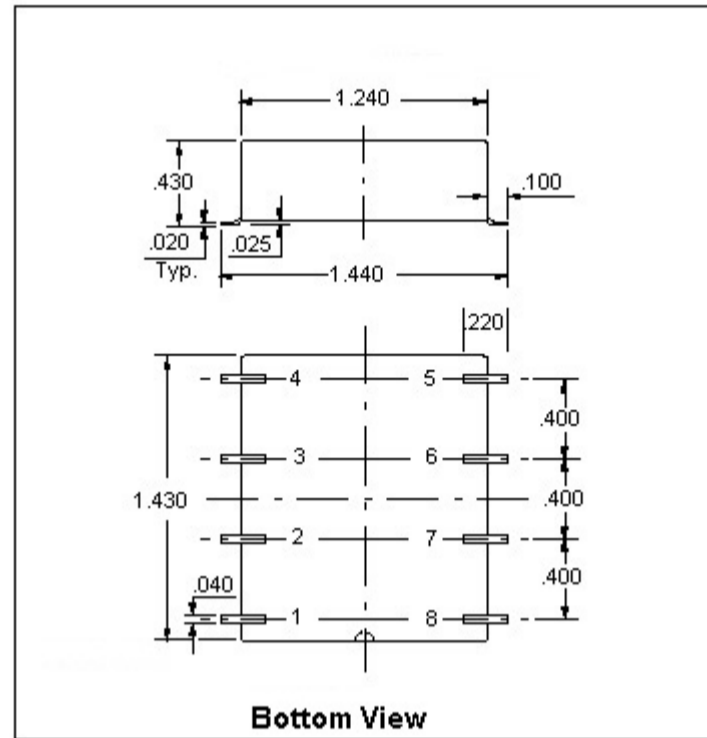
(\*) Unit is capable of sourcing Maximum Load Current over entire Input Voltage Range

**Safety Note:** The high voltage power supplies described in this datasheet generate voltages which can be lethal. They should only be installed and used by personnel who have received the appropriate training and who are fully aware of the hazards that exist.

**PLUG IN & SURFACE MOUNT DESIGNATION**

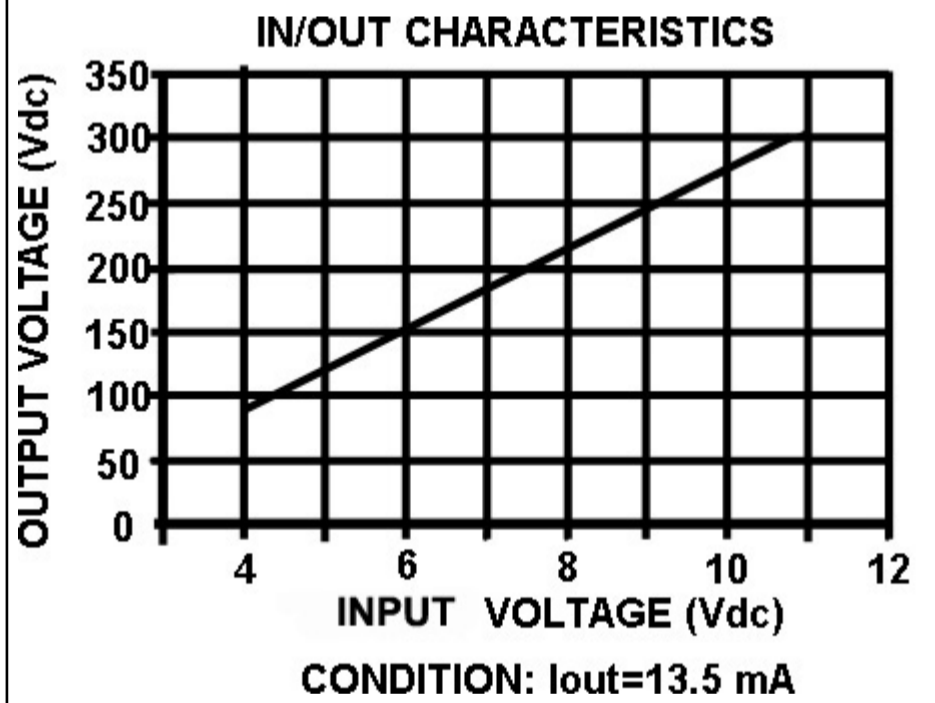
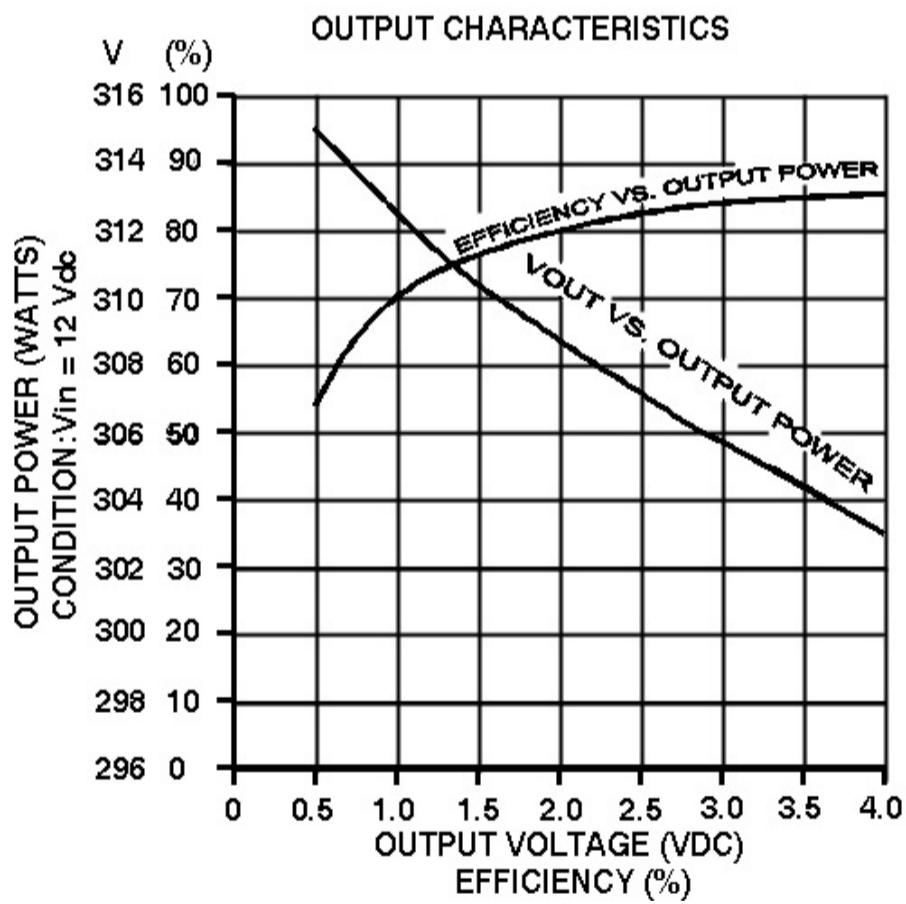
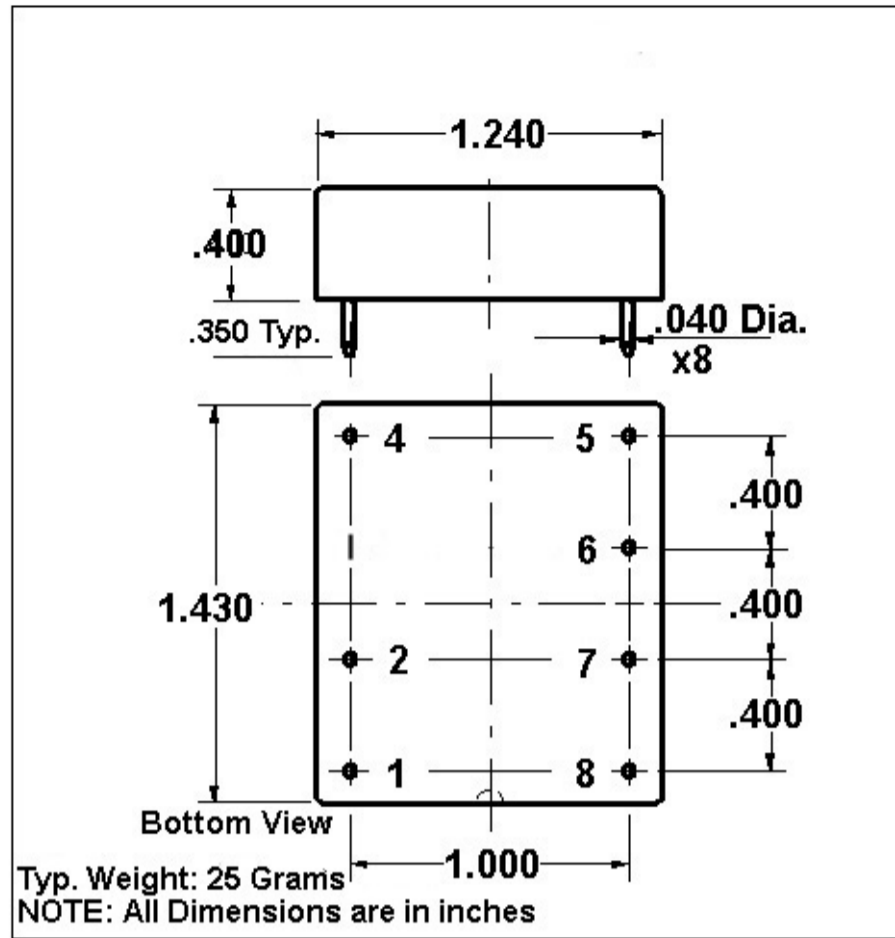
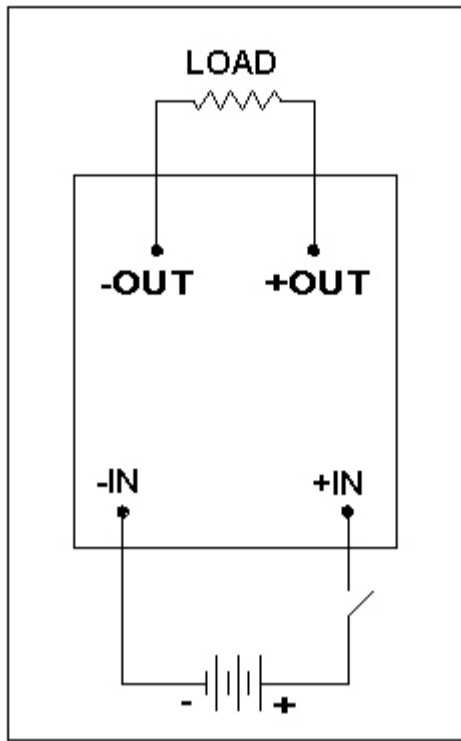
PIN #	FUNCTION	
	Plug-In	Surface Mount
1	-IN	-IN
2	N/C	N/C
3	No Pin	N/C
4	+IN	+IN
5	+OUT	+OUT
6	-OUT	-OUT
7	N/C	N/C
8	N/C	N/C

Series SVV SURFACE MOUNT



Measurements in Inches  
Typical Weight: 25 grams

Series VV PLUG IN



For immediate engineering assistance or to place an order:  
Call Toll Free: 800-431-1064

PICO Electronics, Inc.

143 Sparks Ave. Pelham, NY 10803-1810  
Tel: 914-738-1400 or Fax: 914-738-8225

---