



30AC5S	5	5000	25	75	50	0.5	0.5	0.2	376.56
30AC12S	12	2500	30	81	50	0.5	0.5	0.2	376.56
30AC15S	15	2000	30	82	50	0.5	0.5	0.2	376.56
30AC24S	24	1250	30	83	50	0.5	0.5	0.2	376.56
30AC28S	28	1070	30	83	50	0.5	0.5	0.2	376.56

\*Readings Taken at 115VAC-60Hz. at full load

\*\*10% minimum load required

\*\*\*All units available with 170-240VAC input. Add H prefix to part number - \$40 per unit cost added.

**Series 30AC Dual Output  
Input Voltage 90-130VAC (47-440Hz)  
(Optional 170-240VAC, 47-440 Hz)\*\*\***

Pico Part No.	Output Voltage (VDC)	Max. Load Current (mA) per output	Max. Output Power (watts) per output	EFF @ Full Load Typical (%)*	Output Voltage Ripple @ Full Ld. 1-1 MHz BW mv p-p	Output Voltage Tolerance ( $\pm$ %)* at full load each output	V LD. Reg. 10%-100% Load** ( $\pm$ %)*	Line Regulation ( $\pm$ %)* at full load each output	Price (US \$)
30AC5D	$\pm$ 5	2500	12.5	76	50	0.5	0.5	0.2	420.64
30AC12D	$\pm$ 12	1250	15	78	50	0.5	0.5	0.2	420.64
30AC15D	$\pm$ 15	1000	15	80	50	0.5	0.5	0.2	420.64

\*Readings Taken at 115VAC-60Hz.

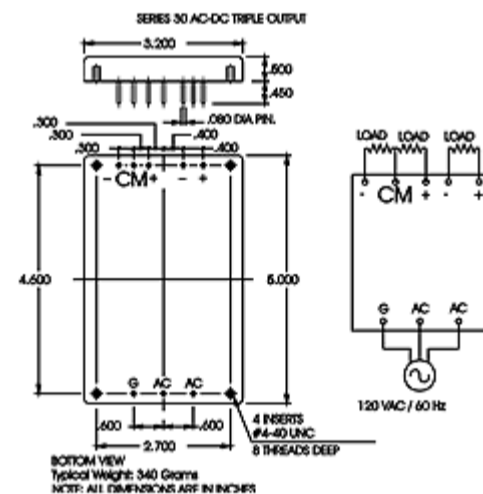
\*\*10% minimum load required

\*\*\*All units available with 170-240VAC input. Add H prefix to part number - \$40 per unit cost added.

**SERIES 30AC TRIPLE OUTPUT**

**Options Available per MIL-STD-883:**

- Expanded Operating temperature (-55° C to +85° C)
- Stabilization Bake: (125° C ambient)
- Temperature Cycle: -55° C. to +125° C
- Hi Temp, Burn in



Note: The recommended torque for mounting screws is 3 to 5 In.-Lbs.  
[Larger Size Drawing And Schematic \[3\]](#)

**Series 30AC Triple Output  
Input Voltage 90-130VAC (47-440Hz)  
(Optional 170-240VAC, 47-440 Hz)\*\*\***

<b>Main Output Voltage</b>	<b>Auxiliary Output Voltage</b>
----------------------------	---------------------------------

Pico Part No.	Output Voltage DC (VDC)	Max. Load Current (mA)	Max. Output Power (watts)	V LD. Reg. 25%-100% Load ( $\pm$ %)*	Output Voltage Ripple @ Full Ld. 1-1 MHz BW mv p-p	Output Voltage (DC) Per Output	Max. Load Current (mA) Per Output	Max. Output Power (watts) Per Output	Volt. Load Reg. 25%-100% Load** ( $\pm$ %)*	Output Ripple @ Full Ld. 1-1 MHz BW mv p-p*	EFF @ Full Load Typical (%)	Price (US \$)
30AC5T12	5	4000	20	0.5	50	$\pm$ 12	208	2.5	5	50	78	464.71
30AC5T15	5	4000	20	0.5	50	$\pm$ 15	166	2.5	5	50	78	464.71
30AC12T5	12	2080	25	0.5	50	$\pm$ 5	500	2.5	5	50	80	464.71
30AC15T5	15	1660	25	0.5	50	$\pm$ 5	500	2.5	5	50	80	464.71
Common Characteristics Main Output Voltage Tolerance $\pm$ 0.5% Main Line Regulation $\pm$ 0.2%						Common Characteristics Auxiliary Output Voltage Tolerance $\pm$ 5% Auxillary Line Regulation $\pm$ 0.2%						
*Measurements Taken at 115VAC-60Hz. **10% minimum load required ***All units available with 170-240VAC input. Add H prefix to part number - \$40 per unit cost added.												

For immediate engineering assistance or to place an order:

**Call Toll Free: 800-431-1064**

## PICO Electronics, Inc.

143 Sparks Ave. Pelham, NY 10803-1810

Tel: 914-738-1400

Fax: 914-738-8225