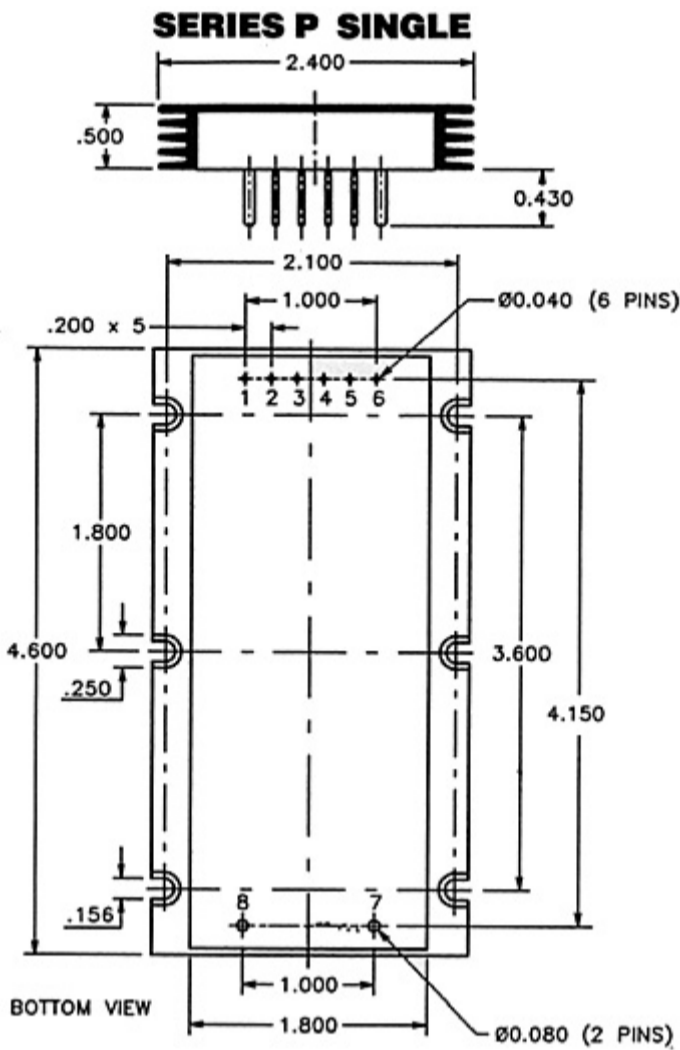


Series P

Single, Dual, and High Voltage

Mechanical Configurations



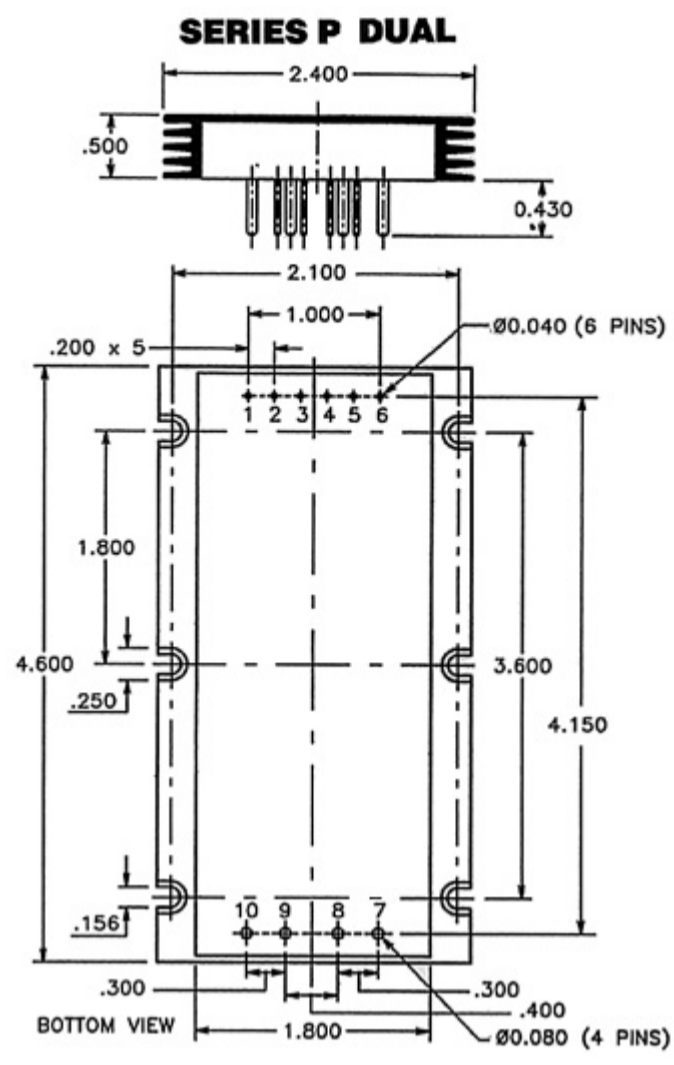
SERIES P SINGLE	
Pin No.	Single
1	+INPUT
2	TRIM DOWN
3	TRIM
4	TRIM UP
5	SHUT DOWN

- 6 -INPUT
- 7 -OUTPUT
- 8 + OUTPUT

SINGLE: TYPICAL WEIGHT
210 GRAMS

NOTE: The recommended torque for mounting screws is 6 to 9 In-Lbs.

Includes PA/PB/PC/PD Modules

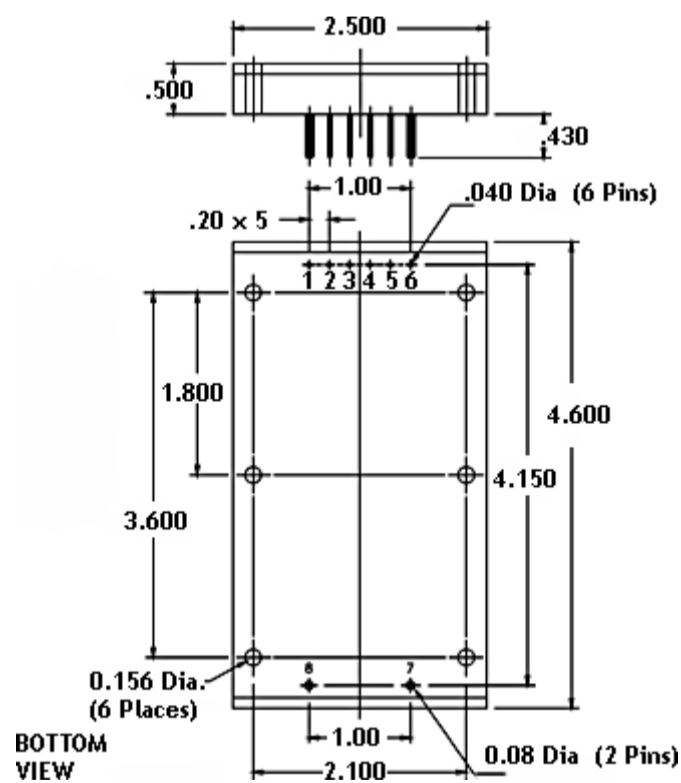


SERIES P DUAL	
Pin No.	DUAL
1	+INPUT
2	TRIM DOWN
3	TRIM
4	TRIM UP
5	SHUT DOWN
6	-INPUT
7	-OUTPUT (1)
8	+ OUTPUT (1)
9	-OUTPUT (2)
10	+ OUTPUT (2)

DUAL: TYPICAL WEIGHT
235 GRAMS

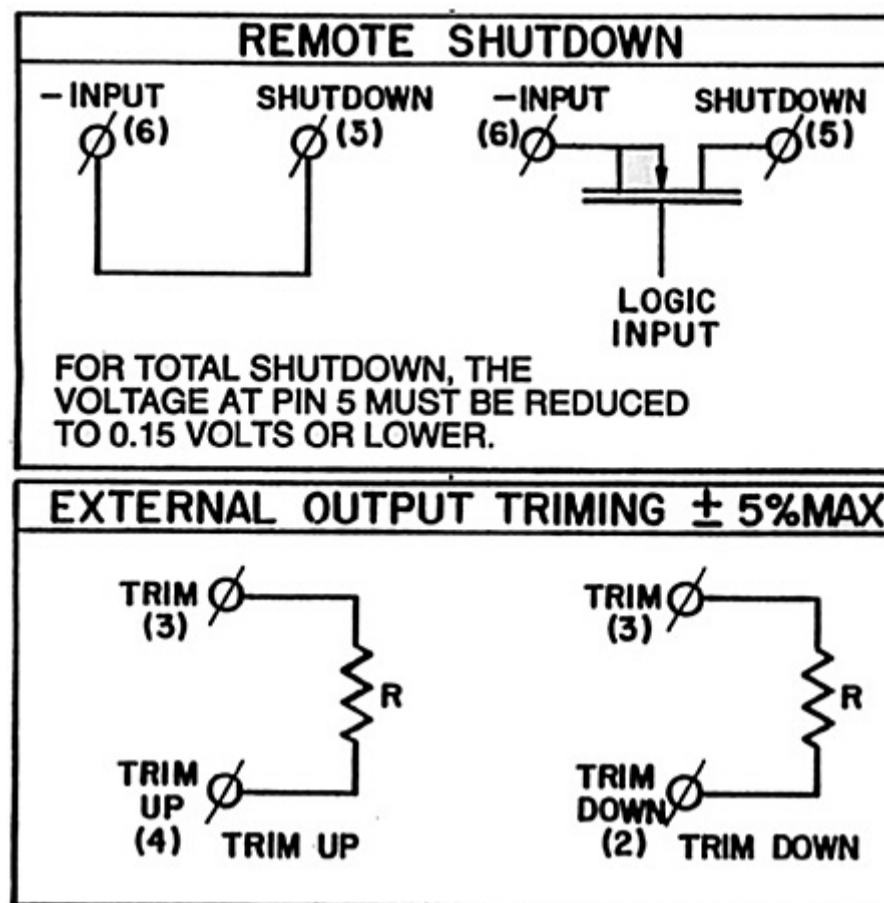
NOTE: The recommended torque for mounting screws is 6 to 9 In-Lbs.

**SERIES P
HIGH VOLTAGE
125 Volts and Above**



NOTE: The recommended torque for mounting screws is 6 to 9 In-Lbs.

HIGH VOLTAGE	
PIN Number	HIGH VOLTAGE
1	+ INPUT
2	TRIM DOWN
3	TRIM
4	TRIM UP
5	SHUT DOWN
6	-INPUT
7	-OUTPUT
8	+OUTPUT



*Typical Resistance Range for Trim Up and Trim Down				
%	1	2	3	5
Resistance				
Trim				
Trim Up	300K	150K	50K	20K
Trim Down	1M	500K	250K	100K
*These units are typical resistance values, as each individual unit will vary slightly. Use of trim pot to determine resistance value is recommended. Use 1/2 watt minimum power rating resistor.				

For immediate engineering assistance or to place an order:

Call Toll Free: 800-431-1064

PICO Electronics, Inc.

143 Sparks Ave. Pelham, NY 10803-1837

Tel: 914-738-1400 or Fax: 914-738-8225