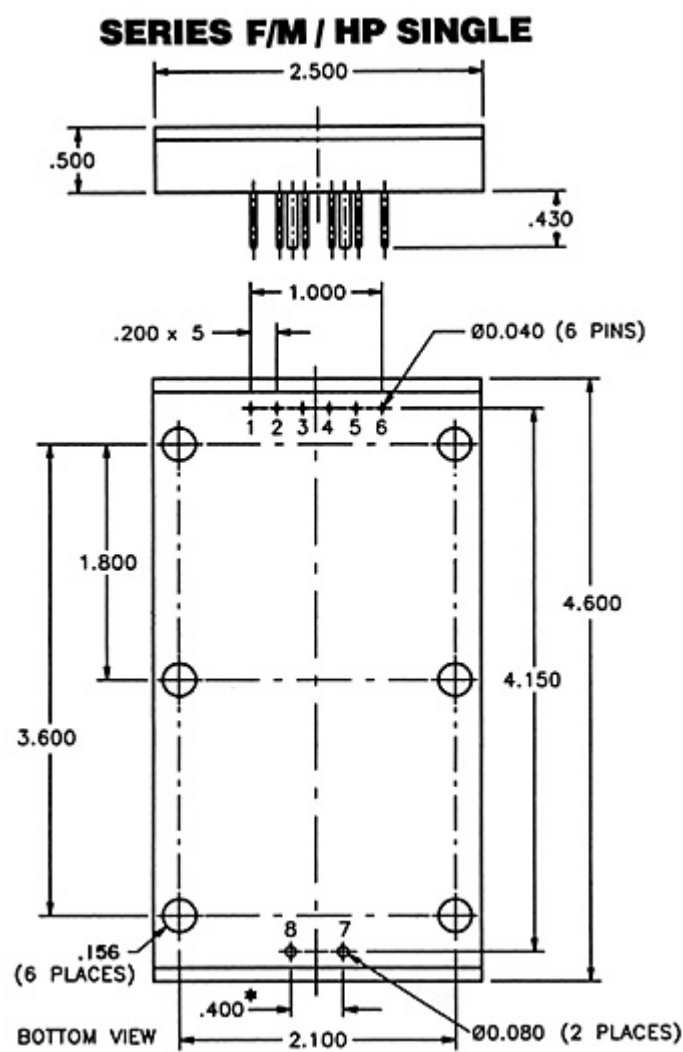


Series F/M/HP
Single, Dual and High Voltage

Mechanical Configurations



SERIES F/M/HP SINGLE	
Pin No.	SINGLE
1	+INPUT
2	TRIM DOWN
3	TRIM
4	TRIM UP

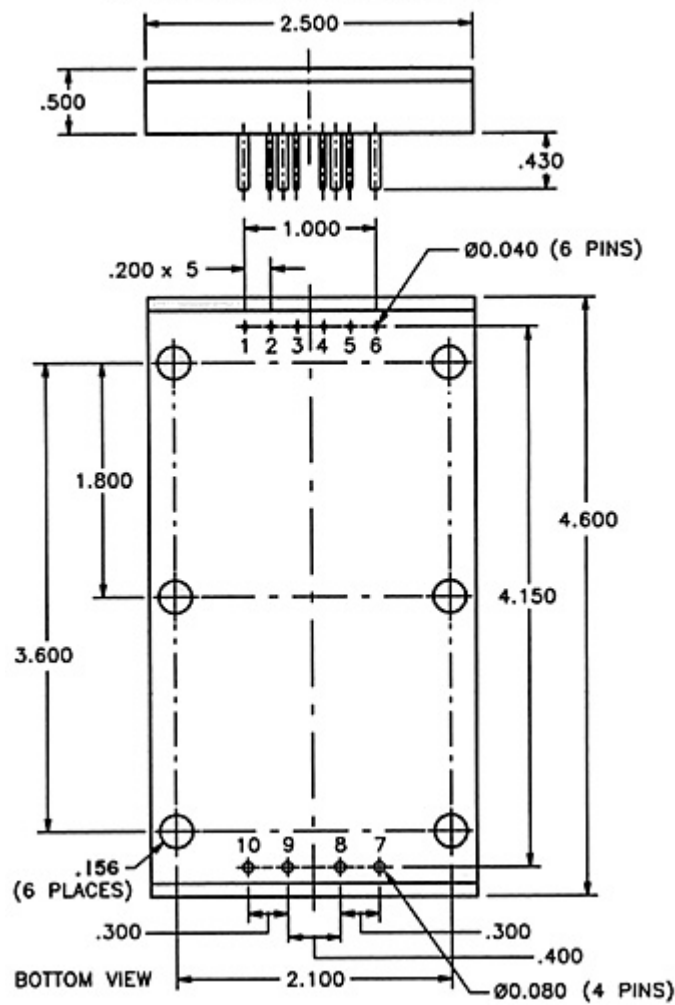
5	SHUT DOWN
6	-INPUT
7	-OUTPUT
8	+ OUTPUT

Typcial Weight: 210 Grams

NOTE: The torque for mounting screws must be 6 to 9 In-Lbs.

* 1.00" for any special single output unit of 100 volts or above.

SERIES F/M/ HP DUAL



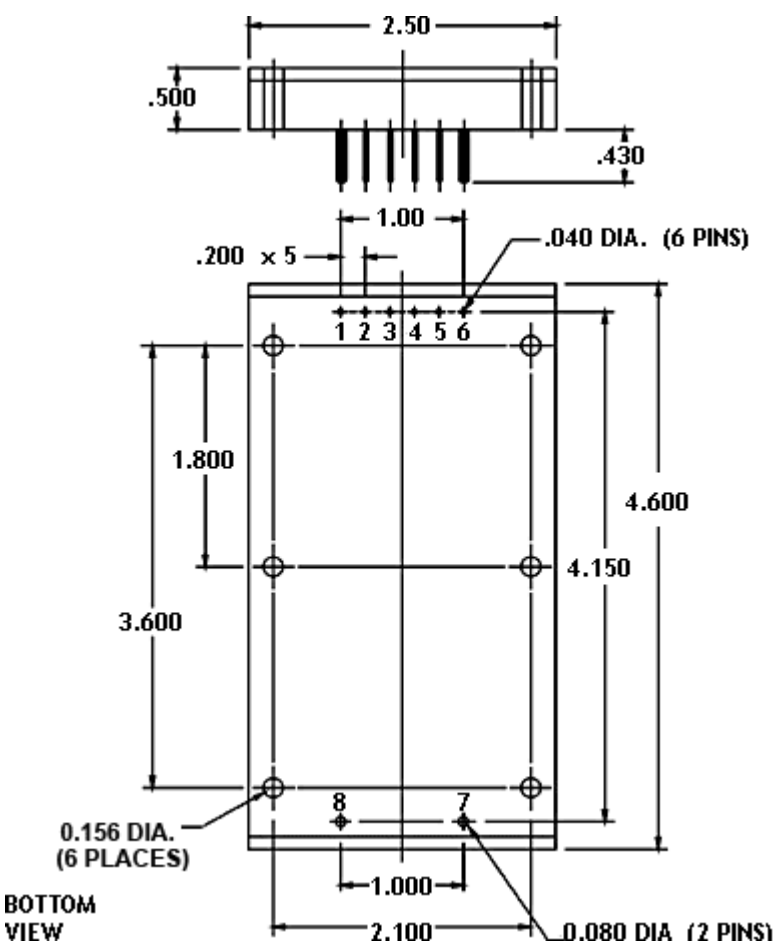
SERIES F/M/HP DUAL

Pin No.	DUAL
1	+INPUT
2	TRIM DOWN
3	TRIM
4	TRIM UP
5	SHUT DOWN
6	-INPUT
7	-OUTPUT (1)
8	+ OUTPUT (1)
9	-OUTPUT (2)
10	+ OUTPUT (2)

Typical Weight: 235 Grams

NOTE: The torque for mounting screws must be 6 to 9 In-Lbs.

**Series F / M/ HP
High Voltage
100 Volts and Above**



NOTE: The torque for mounting screws must be 6 to 9 In-Lbs.

PIN No.	HIGH VOLTAGE
1	+ INPUT
2	TRIM DOWN
3	TRIM
4	TRIM UP
5	SHUT DOWN
6	-INPUT
7	-OUTPUT
8	+OUTPUT

Typical Weight: 220 Grams

*Typical Resistance Range for Trim Up and Trim Down				
%	1	2	3	5
Resistance				
Trim				
Trim Up	300K	150K	50K	20K
Trim Down	1M	500K	250K	100K
*These units are typical resistance values, as each individual unit will vary slightly. Use of trim pot to determine resistance value is recommended. Use 1/2 watt minimum power rating resistor.				

For immediate engineering assistance or to place an order:
Call Toll Free: 800-431-1064

PICO Electronics, Inc.

143 Sparks Ave. Pelham, NY 10803-1837
Tel: 914-738-1400 or Fax: 914-738-8225