

## Audio Transformers:

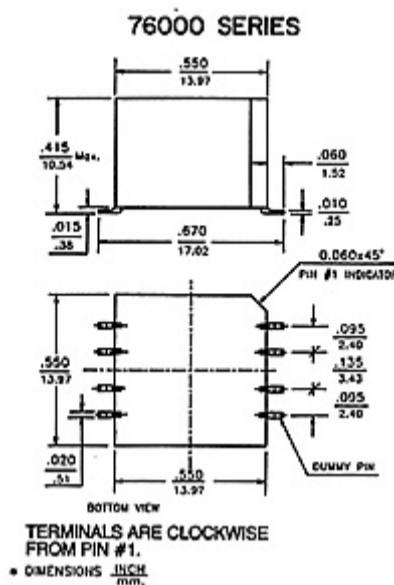
2 Ohm to 100K Ohm; 300Hz to 75KHz; 600 milliwatt at 1KHz

### SURFACE MOUNT

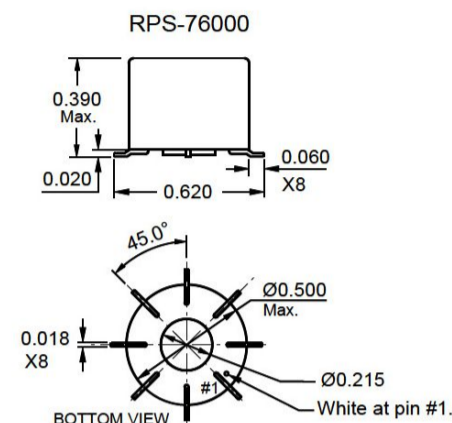
PICO surface mount units utilize materials and methods to withstand extreme temperatures of vapor phase, I.R., and other reflow procedures without degradation of electrical or mechanical characteristics.

### Specifications

- **MIL-PRF-27:** All units manufactured to Mil-PRF-27, Grade 5, Class S.
- **FREQUENCY RESPONSE:**  $\pm 3\text{db}$ , 300 Hz-75 KHz at 1.0 Milliwatt.
- **MAXIMUM DISTORTION:** 5% with rated power level at 1 KHz and 400 Hz.
- **DIELECTRIC STRENGTH:** All units tested at 200 V RMS.
- **INSULATION RESISTANCE:** Greater than 10,000 Megohms at 300 V DC.
- **WEIGHT:** 5 Grams
- **TERMINALS:** Solderability per MIL-STD-202, Method 208.
- **THERMAL SHOCK:** 25 Cycles, Method 107, MIL-STD-202, Test Condition -55° C to +130° C.
- **MOISTURE SENSITIVITY LEVEL:** MSL3



Square Package  
Larger size drawing [1]



Round Package  
Larger size drawing [2]

### Audio Transformers: 2 Ohm to 100K Ohm; 300Hz to 75KHz; 600 milliwatt at 1KHz

PICO Part Number Square Package	PICO Part Number Round Package	Primary Impedence Ohms	Secondary Impedence Ohms Split Windings		Power Watts			Primary Unbal DC Current ma	Prim DC Resist Ohms	Secondary DC Resistance OHMS		Turns Ratio PRIM/SEC		*** Prices 1-9 (US \$)
			SER CONN	PAR CONN	1KHz and higher	400Hz and higher	300Hz and higher			SER CONN	PAR CONN	SEC SER CONN	SEC PAR CONN	
76203	RPS-	20ct	8ct	2	.6	.4	.3	30.0	2	1.2	.3	1.58:1	3.16:1	56.54
76205	76203	20ct	20ct	5	.6	.4	.3	30.0	2	2.8	.7	1:1	2:1	56.54
76210	RPS-	32ct	32ct	8	.6	.4	.3	23.0	3.3	4.5	1.13	1:1	2:1	56.54
76215	76205	40ct	40ct	10	.6	.4	.3	21.0	3.7	5	1.25	1:1	2:1	56.54
76218	RPS-	48ct	16ct	4	.6	.4	.3	19.0	3.75	3	.75	1.73:1	3.46:1	56.54
76220	RPS-	50ct	50ct	12.5	.6	.4	.3	19.0	5	7	1.75	1:1	2:1	56.54
76225	76220	80ct	32ct	8	.6	.4	.3	15.0	7.5	4.3	1.13	1.58:1	3.16:1	56.54
76228	RPS-	100ct	40ct	10	.6	.4	.3	13.0	10.8	5	1.25	1.58:1	3.16:1	56.54
76230	76225	100ct	100ct	25	.6	.4	.3	13.0	10.8	12	3	1:1	2:1	56.54
76235	RPS-	120ct	12.8ct	3.2	.6	.4	.3	12.0	9.3	2.2	.55	3.06:1	6.12:1	56.54
76240	RPS-	120ct	60ct	15	.6	.4	.3	12.0	9	7.2	1.8	1.41:1	2.83:1	56.54
76245	76240	120ct	120ct	30	.6	.4	.3	12.0	11.6	13	3.3	1:1	2:1	56.54
76250	RPS-	150ct	12ct	3	.6	.4	.3	11.0	11.2	2.2	55	3.54:1	7.08:1	56.54
76255	76245	150ct	50ct	12.5	.6	.4	.3	11.0	13	6.8	1.7	1.73:1	3.46:1	56.54
76260	RPS-	150ct	100ct	25	.6	.4	.3	11.0	13	11.8	3	1.22:1	2.45:1	56.54



76390	RPS-	640ct	12.8ct	3.2	.6	.4	.3	5.5	66	1.7	.43	7.07:1	14.14:1	56.54
76395	76390	700ct	100ct	25	.6	.4	.3	5.0	69	12	3	2.65:1	5.29:1	56.54
76400	RPS-	800ct	12.8ct	3.2	.6	.4	.3	5.0	75	1.7	.43	7.9:1	15.8:1	56.54
76405	76395	800ct	48ct	12	.6	.4	.3	5.0	75	6.8	1.7	4.08:1	8.16:1	56.54
76410	RPS-	800ct	800ct	200	.6	.4	.3	5.0	75	105	26	1:1	2:1	56.54
76415	RPS-	900ct	600ct	150	.6	.4	.3	4.5	79	75	19	1.22:1	2.45:1	56.54
76420	76415	1000ct	12ct	3	.6	.4	.3	4.5	103	1.6	.4	9.13:1	18.3:1	56.54
76425	RPS-	1000ct	50ct	12.5	.6	.4	.3	4.5	103	6.4	1.6	4.47:1	8.94:1	56.54
76430	76420	1000ct	1000ct	250	.6	.4	.3	4.5	103	115	28	1:1	2:1	56.54
76435	RPS-	1060ct	12.8ct	3.2	.6	.4	.3	4.0	108	1.7	.43	9.1:1	18.2:1	56.54
76440	RPS-	1200ct	12.8ct	3.2	.6	.4	.3	4.0	113	1.7	.43	9.68:1	19.4:1	56.54
76445	76440	1200ct	500ct	125	.6	.4	.3	4.0	113	54	13.5	1.55:1	3.1:1	56.54
76450	RPS-	1200ct	1200ct	300	.6	.4	.3	4.0	113	126	31.6	1:1	2:1	56.54
76455	76445	*1200ct	1200ct	-	.6	.4	.3	4.0	111	125	-	1:1	-	56.54
76460	RPS-	1500ct	12ct	3	.6	.4	.3	3.5	126	1.6	.4	11.2:1	22.4:1	56.54
76465	RPS-	1500ct	500ct	125	.6	.4	.3	3.5	126	68	17	1.73:1	3.46:1	56.54
76470	76465	*1500ct	600ct	-	.6	.4	.3	3.5	126	94	-	1.58:1	-	56.54
76475	RPS-	*1500ct	1500ct	-	.6	.4	.3	3.5	126	176	-	1:1	-	56.54
76480	76470	1600ct	12.8ct	3.2	.6	.4	.3	3.5	130	1.7	.43	11.2:1	22.4:1	56.54
76483	RPS-	2000ct	8ct	2	.6	.4	.3	3.0	210	1.2	.3	15.8:1	31.6:1	56.54
76485	RPS-	2000ct	2000ct	500	.6	.4	.3	3.0	198	218	55	1:1	2:1	56.54
76490	76485	*2000ct	2000ct	-	.6	.4	.3	3.0	198	218	-	1:1	-	56.54
76495	RPS-	2000ct	8000ct	2000	.6	.4	.3	3.0	198	850	213	1:2	1:1	56.54
76497	76490	2500ct	2500ct	625	.6	.4	.3	2.5	220	305	76	1:1	2:1	56.54
76500	RPS-	3000ct	3000ct	750	.6	.4	.3	2.5	243	335	84	1:1	2:1	56.54

PICO Part Number Square Package	PICO Part Number Round Package	Primary Impedance Ohms	Secondary Impedance Ohms Split Windings		Power Watts			Primary Unbal DC Current ma	Prim DC Resis Ohms
			SER CONN	PAR CONN	1KHz and higher	400Hz and higher	300Hz and higher		
76505	RPS-76505	*3000ct	3000ct	-	.6	.4	.3	2.5	304
76510	RPS-76510	3600ct	3600ct	900	.6	.4	.3	2.5	330
76512	RPS-76512	4000ct	16ct	4	.6	.4	.3	2.0	350
76514	RPS-76514	4000ct	600ct	150	.6	.4	.3	2.0	350
76515	RPS-76515	4000ct	1000ct	250	.6	.4	.3	2.0	350
76520	RPS-76520	*4000ct	8000ct	-	.6	.4	.3	2.0	350
76525	RPS-76525	5000ct	500ct	125	.6	.4	.3	2.0	350
76530	RPS-76530	5000ct	5000ct	1250	.6	.4	.3	2.0	390
76535	RPS-76535	7500ct	50ct	12.5	.6	.4	.3	1.5	600
76540	RPS-76540	7500ct	100ct	25	.6	.4	.3	1.5	600
76545	RPS-76545	7500ct	600ct	150	.6	.4	.3	1.5	600
76550	RPS-76550	7500ct	2500ct	625	.6	.4	.3	1.5	600
76555	RPS-76555	*7500ct	7500ct	-	.6	.4	.3	1.5	750
76560	RPS-76560	8000ct	12.8ct	3.2	.6	.4	.3	1.5	750
76565	RPS-76565	8000ct	1000ct	250	.6	.4	.3	1.5	750

76570	RPS-76570	*8000ct	1200ct	-	.6	.4	.3	1.5	750			
76575	RPS-76575	*9000ct	9000ct	-	.6	.4	.3	1.4	796			
76580	RPS-76580	10,000ct	12.8ct	3.2	.6	.4	.3	1.4	1048			
76585	RPS-76585	10,000ct	16ct	4	.6	.4	.3	1.4	1048			
76590	RPS-76590	10,000ct	100ct	25	.6	.4	.3	1.4	839			
76595	RPS-76595	10,000ct	200ct	50	.6	.4	.3	1.4	839			
76600	RPS-76600	10,000ct	500ct	125	.6	.4	.3	1.4	850			
76605	RPS-76605	10,000ct	600ct	150	.6	.4	.3	1.4	850			
76610	RPS-76610	10,000ct	1000ct	250	.6	.4	.3	1.4	850			
76615	RPS-76615	10,000ct	1200ct	300	.6	.4	.3	1.4	850			
76620	RPS-76620	10,000ct	1500ct	375	.6	.4	.3	1.4	850			
76625	RPS-76625	10,000ct	2000ct	500	.6	.4	.3	1.4	850			
76630	RPS-76630	10,000ct	5000ct	1250	.6	.4	.3	1.4	850			
76635	RPS-76635	10,000ct	7500ct	1875	.6	.4	.3	1.4	850			
76640	RPS-76640	10,000ct	10,000ct	2500	.6	.4	.3	1.4	866			
76645	RPS-76645	*10,000ct	10,000ct	-	.6	.4	.3	1.4	1060			
76650	RPS-76650	15,000ct	400ct	100	.6	.4	.3	1.0	1305			
76652	RPS-76652	15,000ct	500ct	125	.6	.4	.3	1.0	1305			
76655	RPS-76655	15,000ct	600ct	150	.6	.4	.3	1.0	1305			
76660	RPS-76660	15,000ct	10,000ct	2500	.6	.4	.3	1.0	1305			
76665	RPS-76665	*15,000ct	15,000ct	-	.6	.4	.3	1.0	1305			
76670	RPS-76670	15,000ct	15,000ct	3750	.6	.4	.3	1.0	1305			
76675	RPS-76675	16,000ct	1000ct	250	.6	.4	.3	1.0	1343			
76680	RPS-76680	20,000ct	500ct	125	.5	.4	.3	1.0	1560			
76685	RPS-76685	20,000ct	600ct	150	.5	.4	.3	1.0	1560			
76690	RPS-76690	20,000ct	800ct	200	.5	.4	.3	1.0	1560			
76695	RPS-76695	20,000ct	1000ct	250	.5	.4	.3	1.0	1560			
76700	RPS-76700	20,000ct	5000ct	1250	.5	.4	.3	1.0	1560			
76705	RPS-76705	20,000ct	10,000ct	2500	.5	.4	.3	1.0	1560			
76710	RPS-76710	*20,000ct	20,000ct	-	.5	.4	.3	1.0	1560			
76715	RPS-76715	25,000ct	500ct	125	.4	.4	.3	0.8	2170			
76720	RPS-76720	25,000ct	1000ct	250	.4	.4	.3	0.8	2170			
76725	RPS-76725	30,000ct	50ct	12.5	.33	.33	.3	0.8	2400			
76730	RPS-76730	30,000ct	1200ct	300	.33	.33	.3	0.8	2400			
76732	RPS-76732	30,000ct	500ct	125	.33	.33	.3	0.8	2400			
76734	RPS-76734	30,000ct	200ct	50	.33	.33	.3	0.8	2400			
76735	RPS-76735	30,000ct	5000ct	1250	.33	.33	.3	0.8	2400			
76740	RPS-76740	30,000ct	10,000ct	2500	.33	.33	.3	0.8	2400			
76745	RPS-76745	*30,000ct	30,000ct	-	.33	.33	.3	0.8	3000			
76750	RPS-76750	40,000ct	400ct	100	.25	.25	.25	0.7	3400			
PICO Part Number Square Package	PICO Part Number Round Package	Primary Impedence Ohms	Secondary Impedence Ohms Split Windings		Power Watts			Primary Unbal DC Current ma	Prim DC Resist Ohms	Secondary DC Resistance OHMS		T
			SER CONN	PAR CONN	1KHz and higher	400Hz and higher	300Hz and higher			SER CONN	PAR CONN	
76755	RPS-76755	40,000ct	2000ct	500	.25	.25	.25	0.7	3400	268	67	4.4
76760	RPS-76760	40,000ct	4000ct	1000	.25	.25	.25	0.7	3400	476	119	3.1
76765	RPS-76765	40,000ct	20,000ct	5000	.25	.25	.25	0.7	3400	2700	675	1.4
76770	RPS-76770	*40,000ct	40,000ct	-	.25	.25	.25	0.7	3400	4750	-	1
76775	RPS-76775	50,000ct	200ct	50	.2	.2	.2	0.6	4850	27	6.7	15
76777	RPS-76777	50,000ct	500ct	125	.2	.2	.2	0.6	4850	68	17	10
76779	RPS-76779	50,000ct	600ct	150	.2	.2	.2	0.6	4850	75	18.5	9.1
76780	RPS-76780	60,000ct	15,000ct	3750	.16	.16	.16	0.5	5275	2250	563	2
76785	RPS-76785	62,500ct	50ct	12.5	.16	.16	.16	0.5	5445	8.7	2.2	35
76787	RPS-76787	80,000ct	15,000ct	3750	.12	.12	.12	0.4	6130	2250	563	2.3
76790	RPS-76790	90,000ct	10,000ct	2500	.1	.1	.1	0.4	8140	1520	380	3
76795	RPS-76795	95,000ct	15,000ct	3750	.1	.1	.1	0.4	8400	2250	563	2.5
76800	RPS-76800	100,000ct	60ct	15	.1	.1	.1	0.4	8750	9.2	2.3	40
76805	RPS-76805	100,000ct	100ct	25	.1	.1	.1	0.4	8750	15	3.8	31
76810	RPS-76810	100,000ct	500ct	125	.1	.1	.1	0.4	8750	68	17	14
76815	RPS-76815	100,000ct	10,000ct	2500	.1	.1	.1	0.4	8750	1535	385	3.1

\* INCLUDES ELECTROSTATIC SHIELD

\*\*\*Discount Prices:

- 1-9 Net;
- 10-24 less 10%;
- 25-49 less 16%;
- 50-99 less 23%;
- 100-499 less 30%

Ordering Instructions:

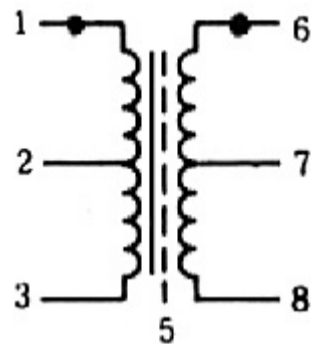
- No minimum.  
Net 30 days F.O.B. Pelham, NY

**Delivery--stock to one week for sample orders.**

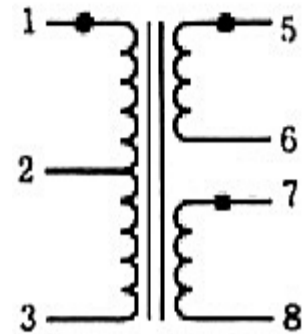
**Features**

- Extreme resistance to thermal shock
- Ultra Miniature size
- PICO is approved QPL source (MIL-PRF-27)
- Magnetic shields available
- Electrostatic shielding can be added
- Variation of standards designs available
- Primary and secondary windings can be used either as input or output
- Every unit in this catalog can be made with a 300 thermal cycle guarantee using PICO's special SR construction. Contact factory for details.

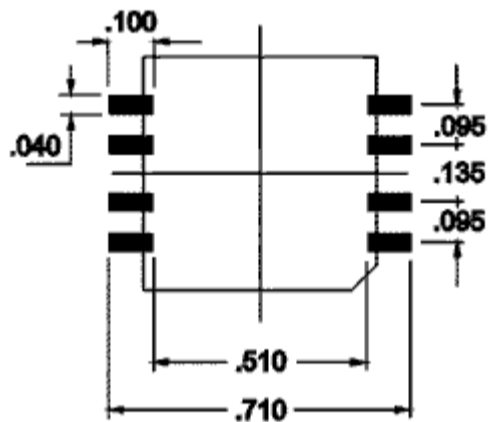
Schematics  
for Transformers  
with Electrostatic Shield



Schematics  
for Transformers  
with Split Secondaries

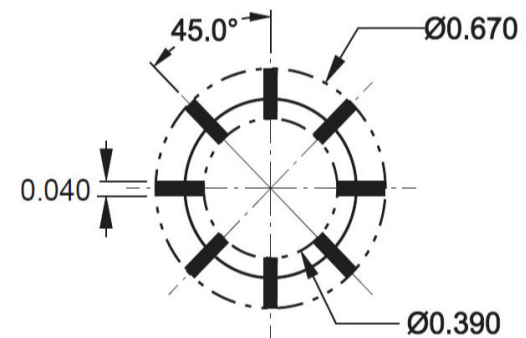


Schematics  
**PICO 76000 Series**



**Land Pattern**

LAND PATTERN FOR  
RPS-76000 AND RPS-77000 SERIES



[Click Here for Thru Hole Version of These Units](#) [3]

For immediate engineering assistance or to place an order:

**Call Toll Free: 800-431-1064**

**PICO Electronics, Inc.**

143 Sparks Ave. Pelham, NY 10803-1810

Tel: 914-738-1400 or Fax: 914-738-8225

[Go back to Surface Mount Transformers and Inductors menu](#) [4]