

4

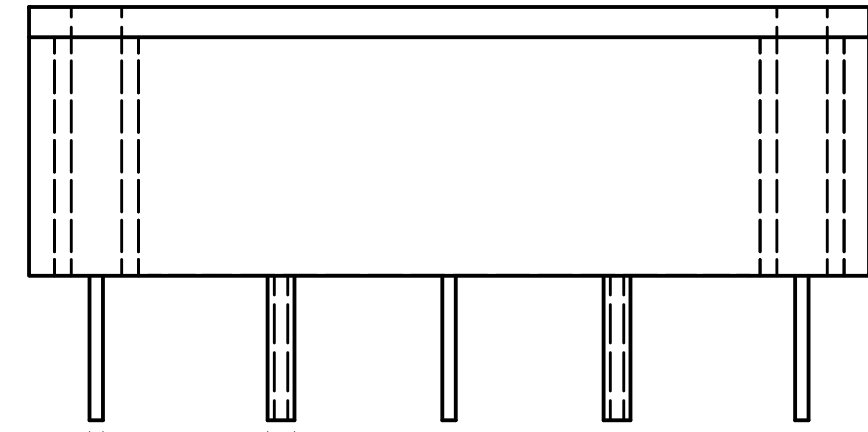
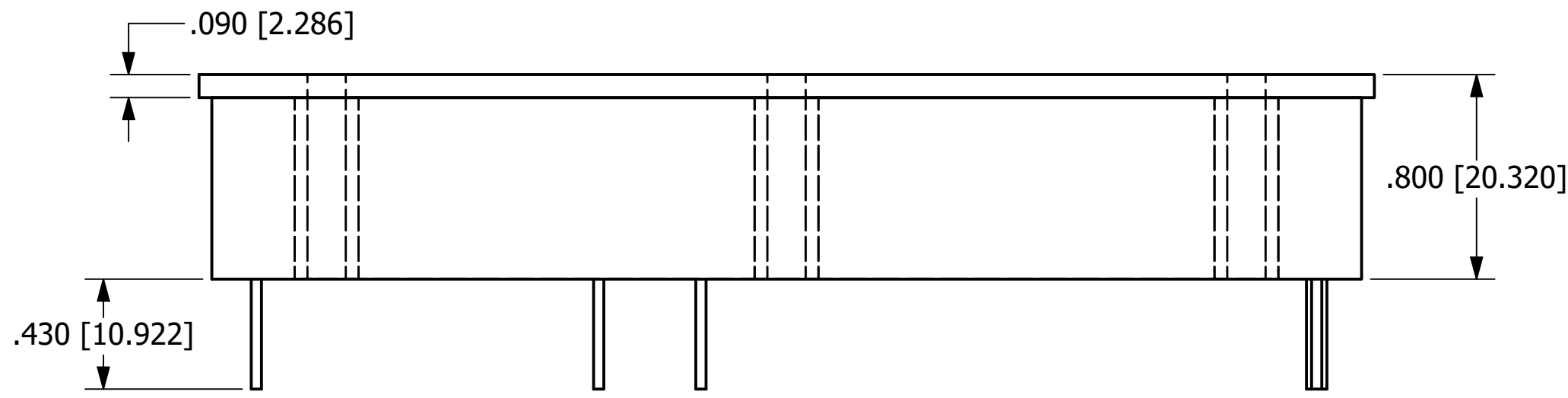
3

2

1

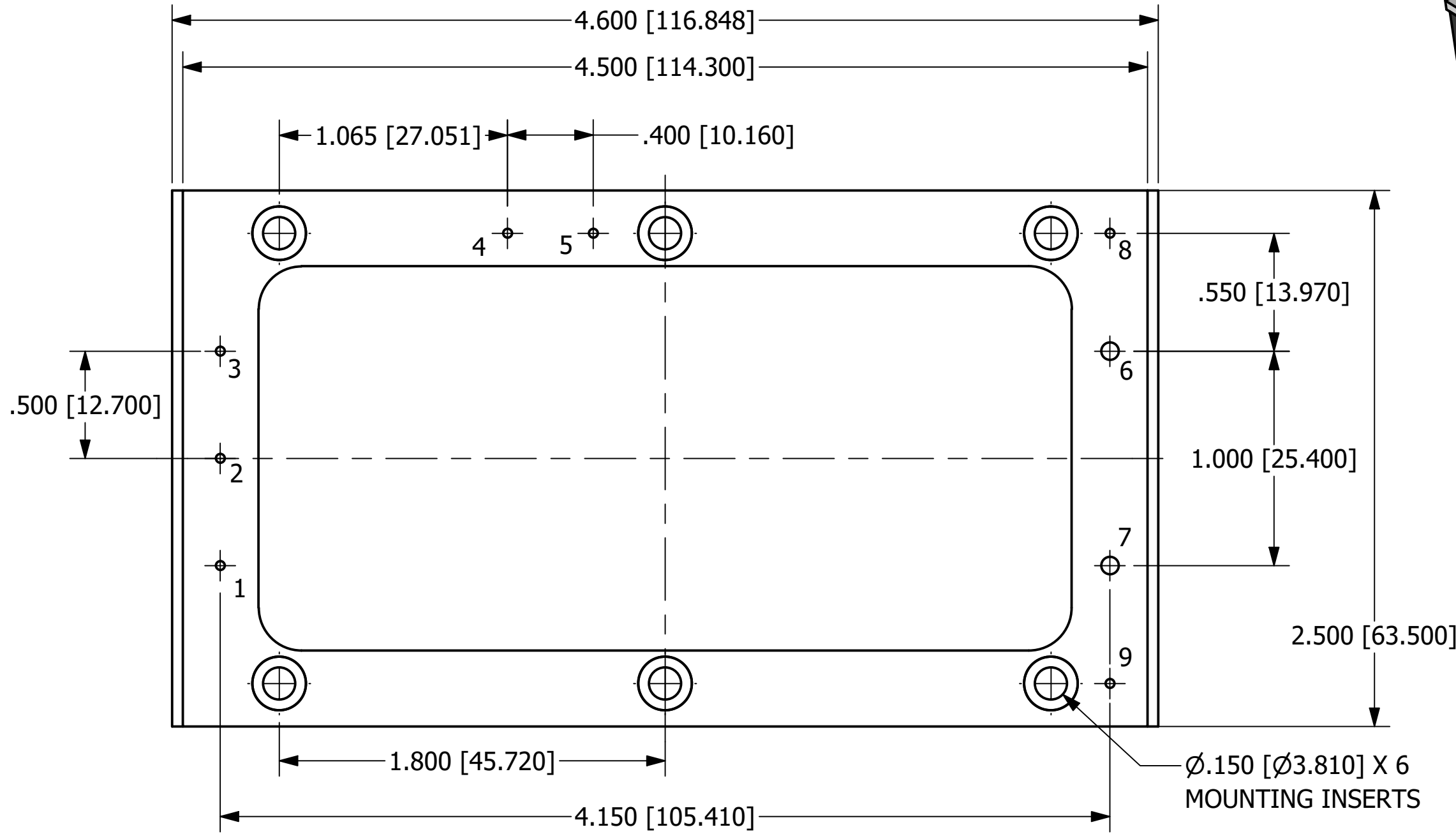
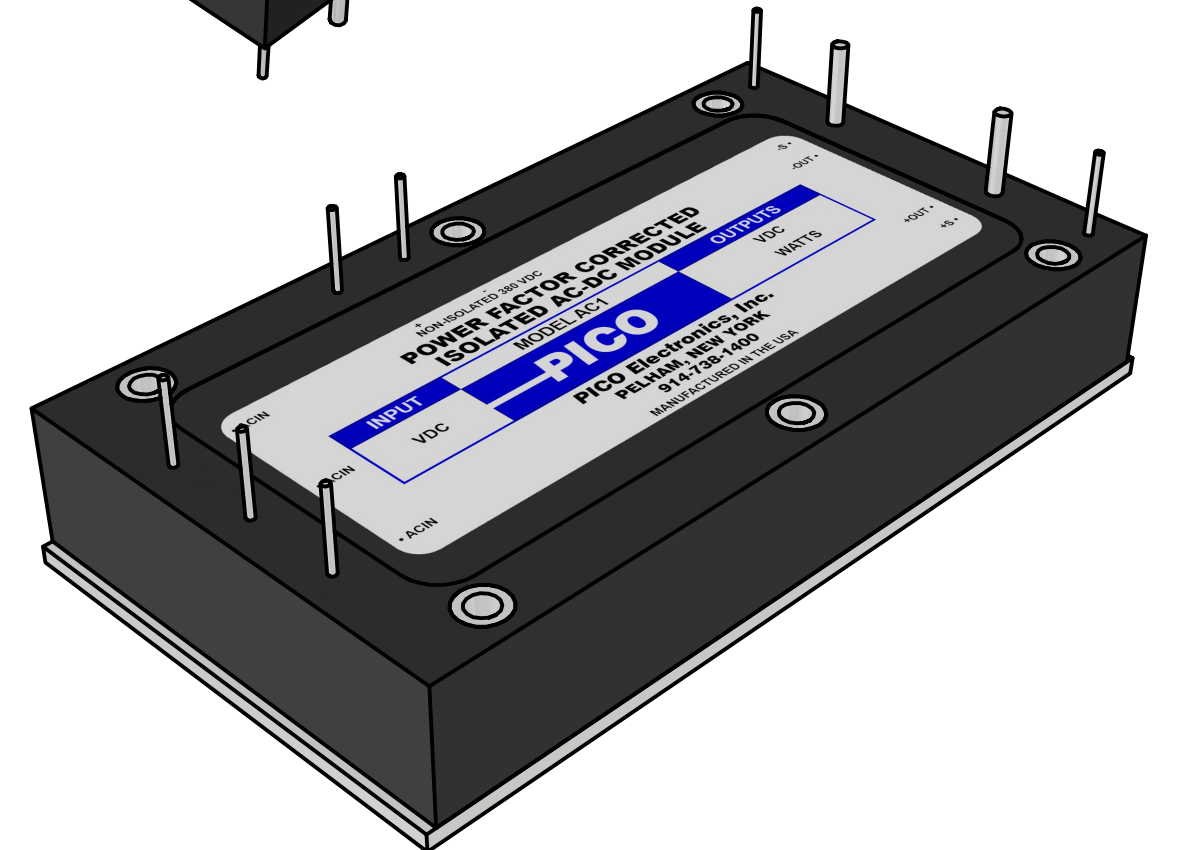
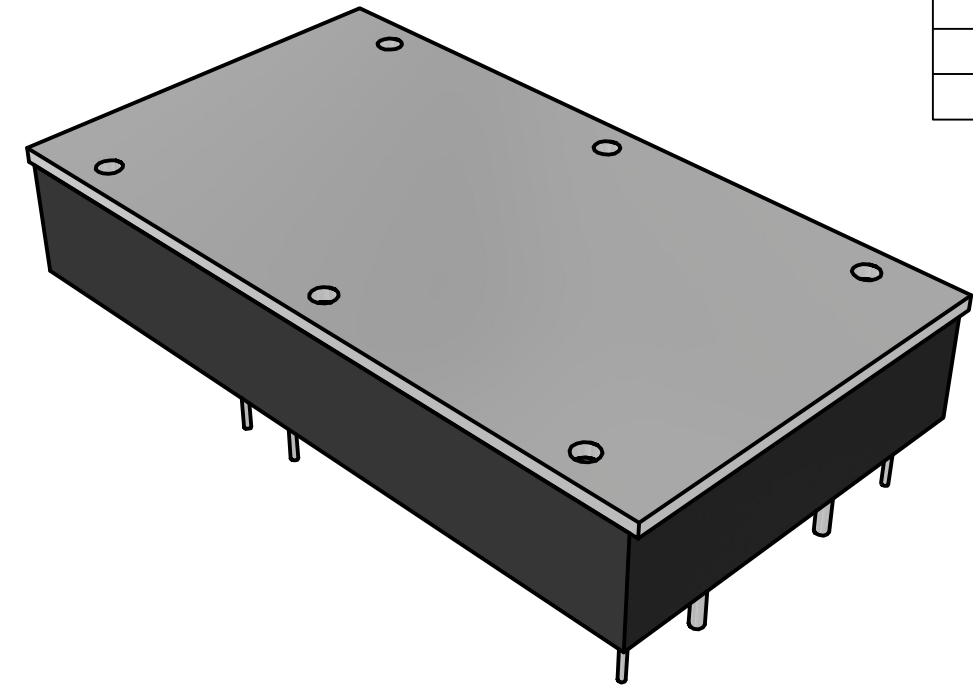
**NOTES**

- a. ALL DIMENSIONS ARE IN INCHES, [ ] = MM
- b. RECOMMENDED TORQUE FOR MOUNTING SCREWS: 6-9 INCH-LBS
- c. EXTERNAL CAPACITOR REQUIRED ACROSS TERMINALS 4 AND 5



PIN	FUNCTION	PIN DIAMETER
1	AC IN	.040 [1.016]
2	AC IN	.040 [1.016]
3	AC IN	.040 [1.016]
4	+380 V BUS	.040 [1.016]
5	-V BUS	.040 [1.016]
6	-V OUT	.080 [2.032]
7	+V OUT	.080 [2.032]
8	-SENSE	.040 [1.016]
9	+SENSE	.040 [1.016]

Ø.040 [Ø1.016] X 7      Ø.080 [Ø2.032] X 2



**BOTTOM VIEW**

**PROPRIETARY AND CONFIDENTIAL**  
 THE INFORMATION CONTAINED IN THIS DRAWING IS THE SOLE PROPERTY OF PICO ELECTRONICS INC. ANY REPRODUCTION IN PART OR AS A WHOLE WITHOUT THE WRITTEN PERMISSION OF PICO ELECTRONICS INC. IS PROHIBITED

DRAWN	P.PALUCH	<b>PICO</b> Electronics	143 Sparks Ave Village of Pelham, NY 10803	
CHECKED	H. VIDAURRE		<b>SERIES AC1</b>	
QA		SIZE		
MFG		<b>C</b>		<b>1</b>
APPROVED		SCALE	NTS	
REVISION DATE	06/06/2023	www.picoelectronics.com		

4

3

2

1