

4

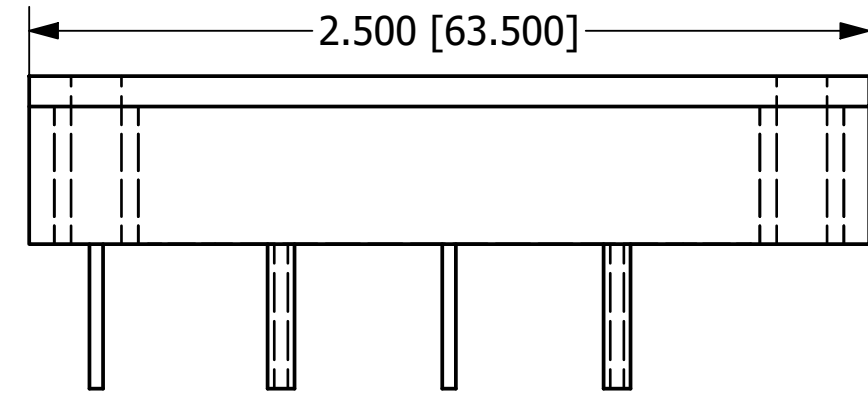
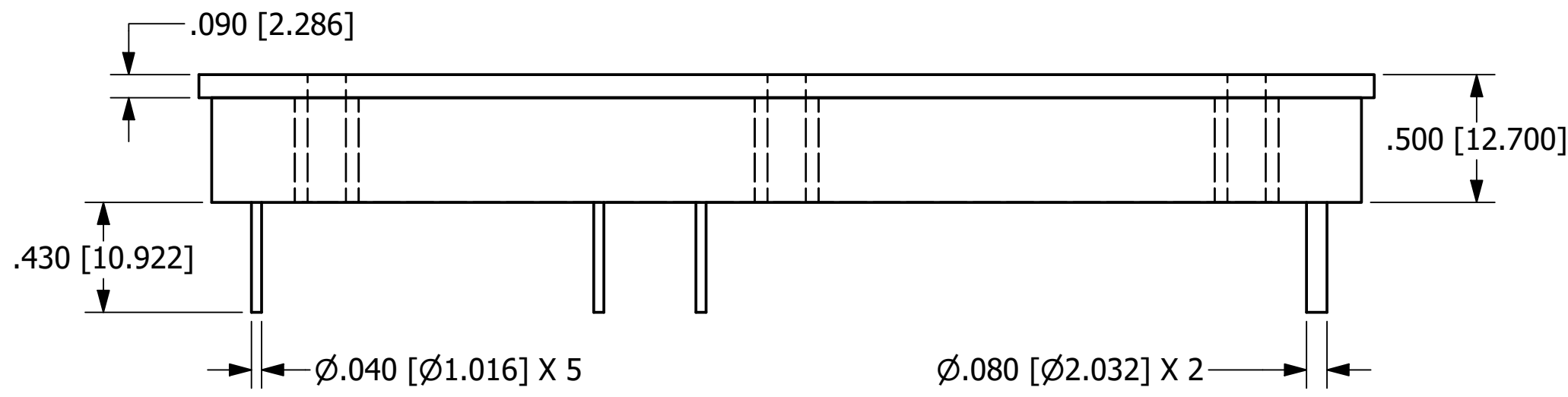
3

2

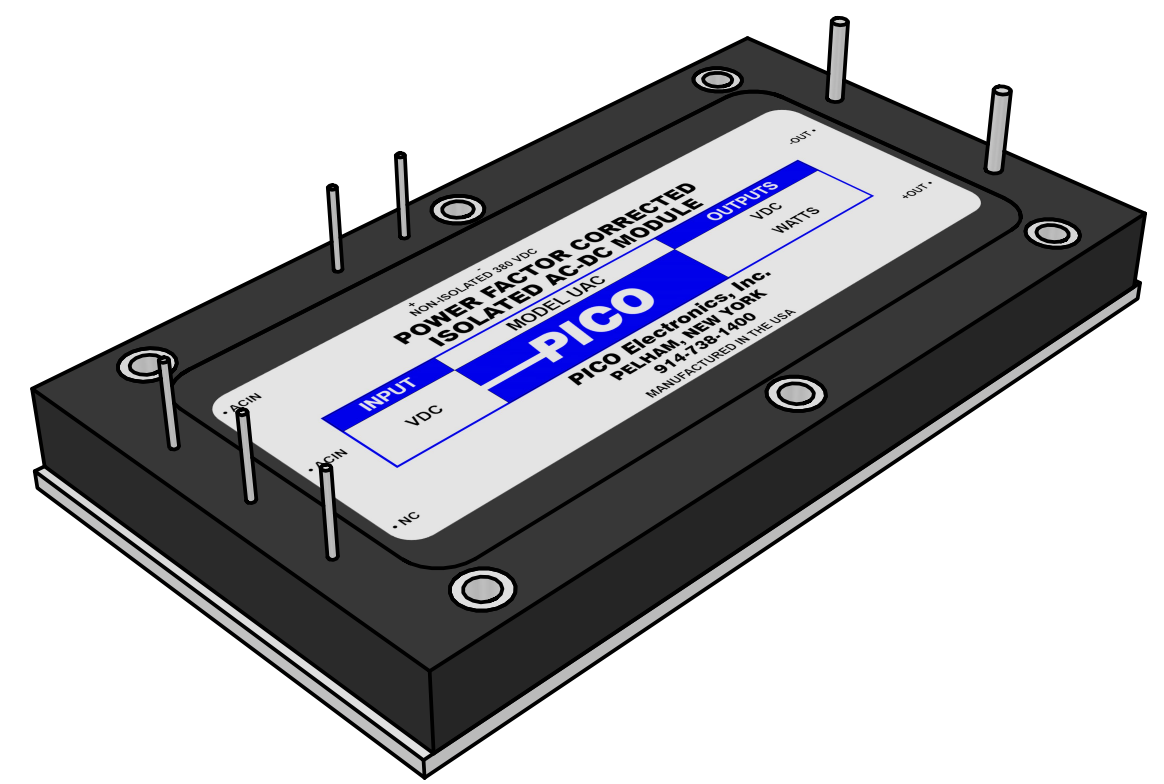
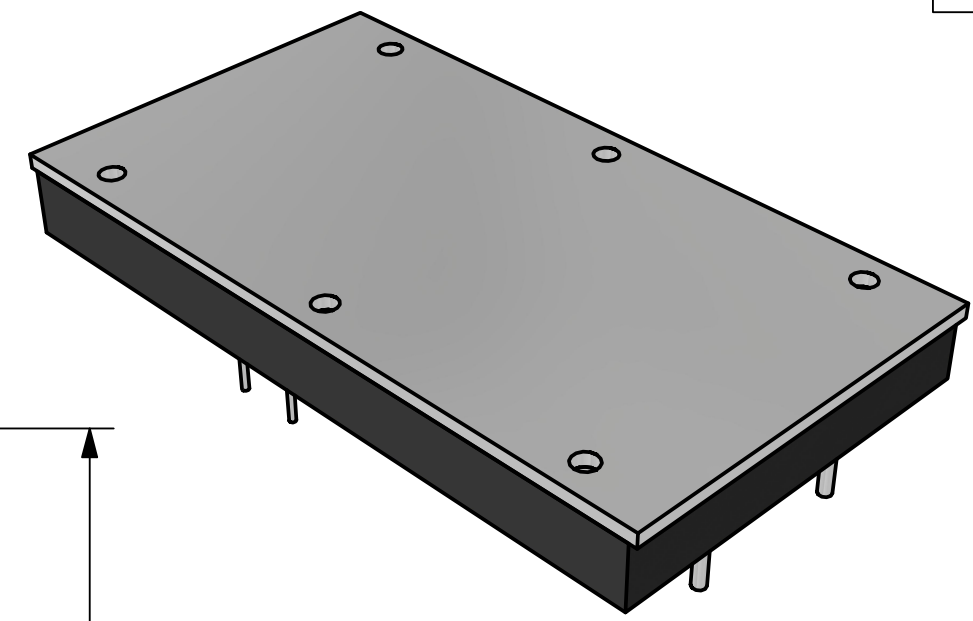
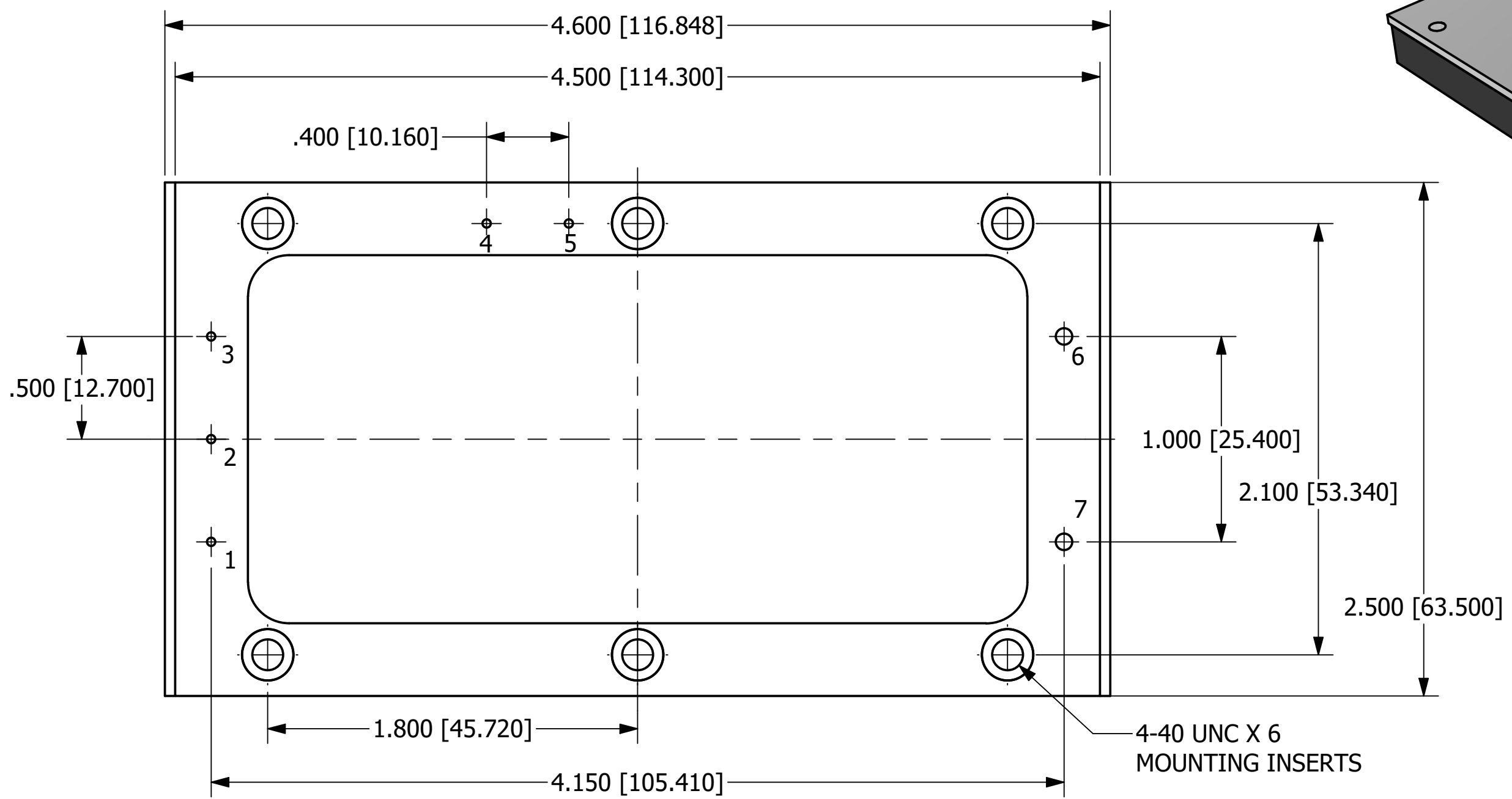
1

NOTES

- a. ALL DIMENSIONS ARE IN INCHES, [] = MM
- b. RECOMMENDED TORQUE FOR MOUNTING SCREWS: 6-9 INCH-LBS
- c. EXTERNAL CAPACITOR REQUIRED ACROSS TERMINALS 4 AND 5



PIN	FUNCTION	PIN DIAMETER
1	AC IN	.040 [1.016]
2	AC IN	.040 [1.016]
3	NC	.040 [1.016]
4	+380V BUS	.040 [2.032]
5	-V BUS	.040 [2.032]
6	-V OUT	.080 [2.032]
7	+V OUT	.080 [2.032]



BOTTOM VIEW

PROPRIETARY AND CONFIDENTIAL
 THE INFORMATION CONTAINED IN THIS DRAWING IS THE SOLE PROPERTY OF PICO ELECTRONICS INC. ANY REPRODUCTION IN PART OR AS A WHOLE WITHOUT THE WRITTEN PERMISSION OF PICO ELECTRONICS INC. IS PROHIBITED

DRAWN	P.PALUCH
CHECKED	H. VIDAURRE
QA	
MFG	
APPROVED	
REVISION DATE	06/06/2023

PICO Electronics 143 Sparks Ave
 Village of Pelham, NY 10803

SERIES UAC

SIZE	C	DWG NO		REV	1
SCALE	NTS	www.picoelectronics.com			

4

3

2

1